



area fieristica fair area

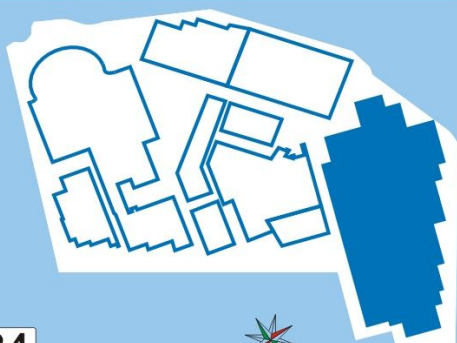


L'Area Fieristica (F1) rappresenta, soprattutto per le piccole e medie imprese artigianali ed industriali, uno strumento ideale di incentivazione, marketing e di promozione internazionale. L'edificio è corredato di uffici, sale per operatori commerciali, salette per dimostrazioni e riunioni, sala stampa, ristorante, bar-ristoro

The Fair area (F1), particularly for small and medium-sized craft and industrial enterprises, represents an ideal instrument for incentivisation, marketing and international promotion. The building is equipped with offices, rooms for commercial operators, demonstration and meeting rooms, a press room, a bar/snack bar



Corpo F1, ingresso da Viale Africa



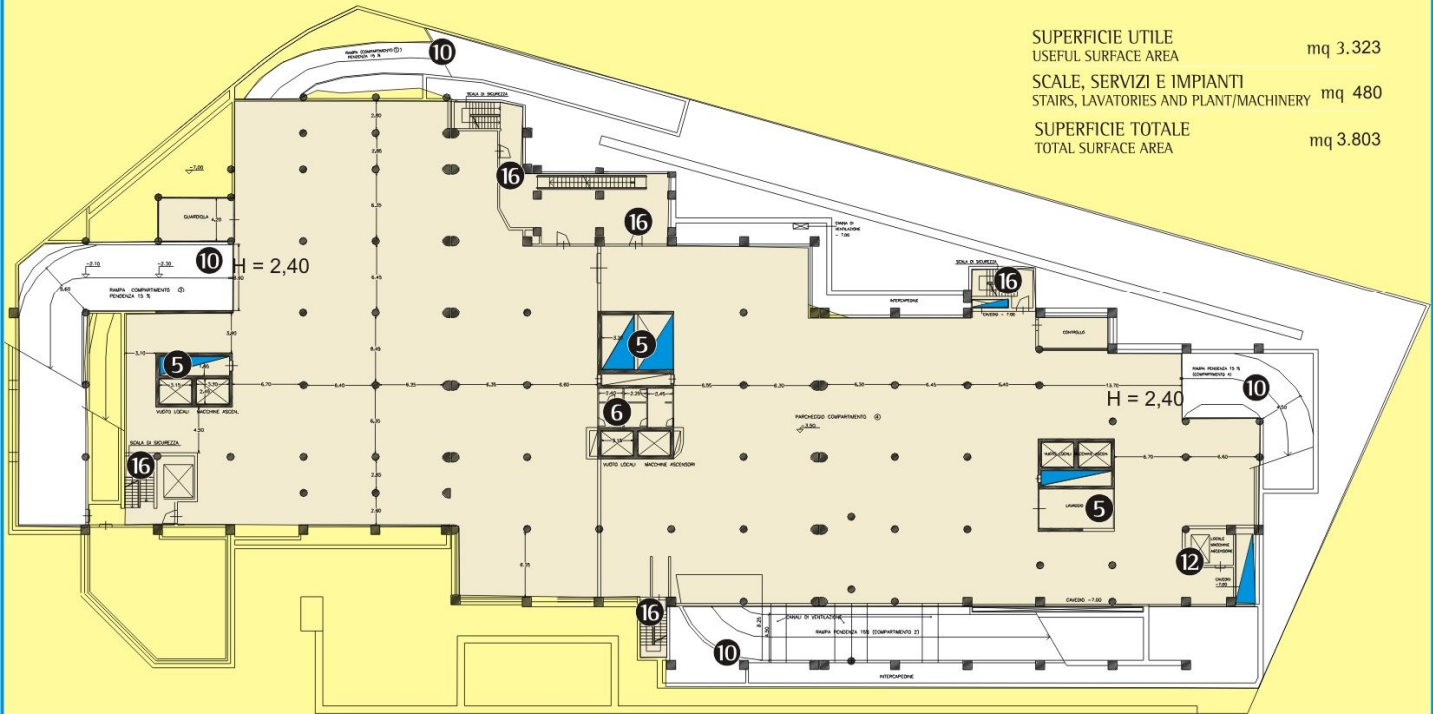
34



Corpo F1, parcheggio



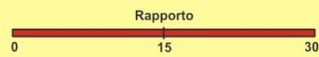
PARCHEGGIO -1



SUPERFICIE UTILE
USEFUL SURFACE AREA mq 3.323

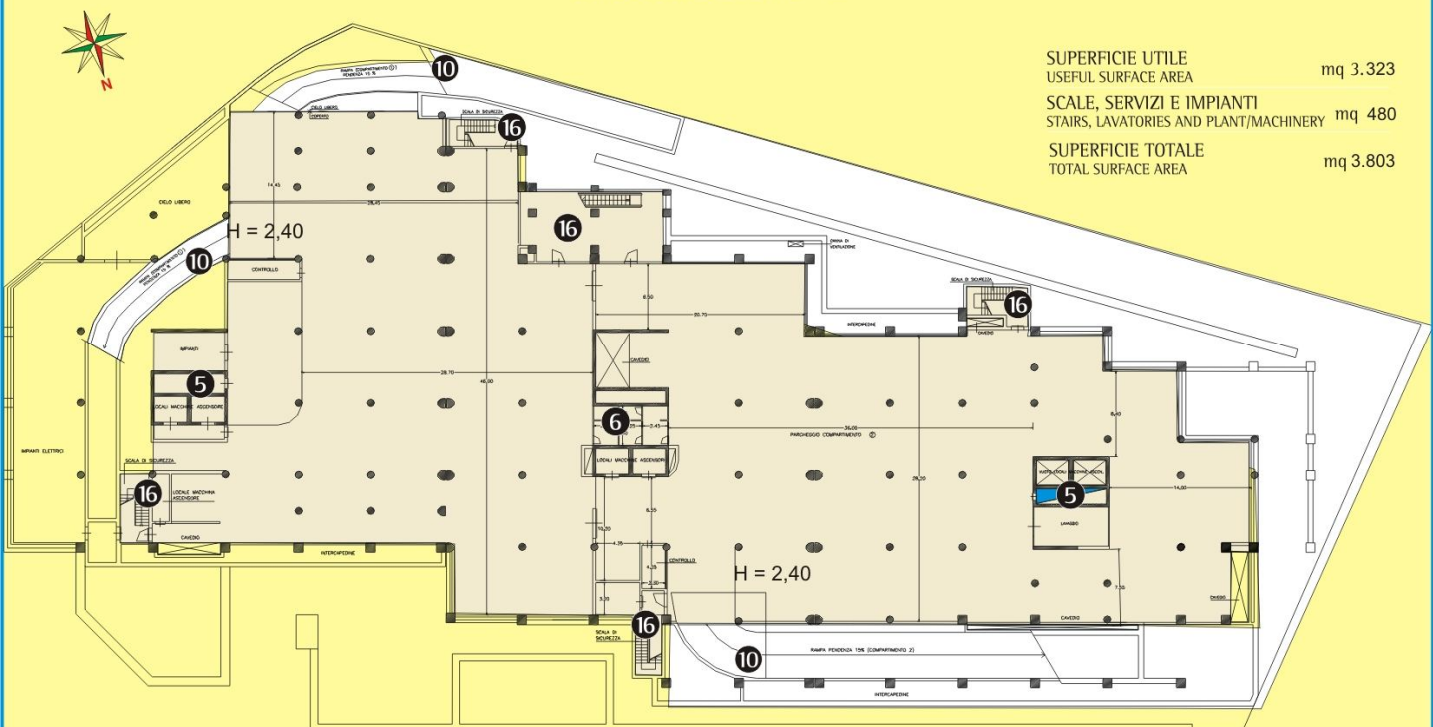
SCALE, SERVIZI E IMPIANTI
STAIRS, LAVATORIES AND PLANT/MACHINERY mq 480

SUPERFICIE TOTALE
TOTAL SURFACE AREA mq 3.803



- 5 Impianti tecnologici - Technological installations
- 6 Servizi - Lavatories
- 10 Rampe di accesso ai due parcheggi interrati
Access ramps to two underground parking lots
- 16 Uscite di Sicurezza - Emergency exits

PARCHEGGIO -2



SUPERFICIE UTILE
USEFUL SURFACE AREA mq 3.323

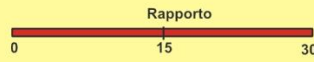
SCALE, SERVIZI E IMPIANTI
STAIRS, LAVATORIES AND PLANT/MACHINERY mq 480

SUPERFICIE TOTALE
TOTAL SURFACE AREA mq 3.803

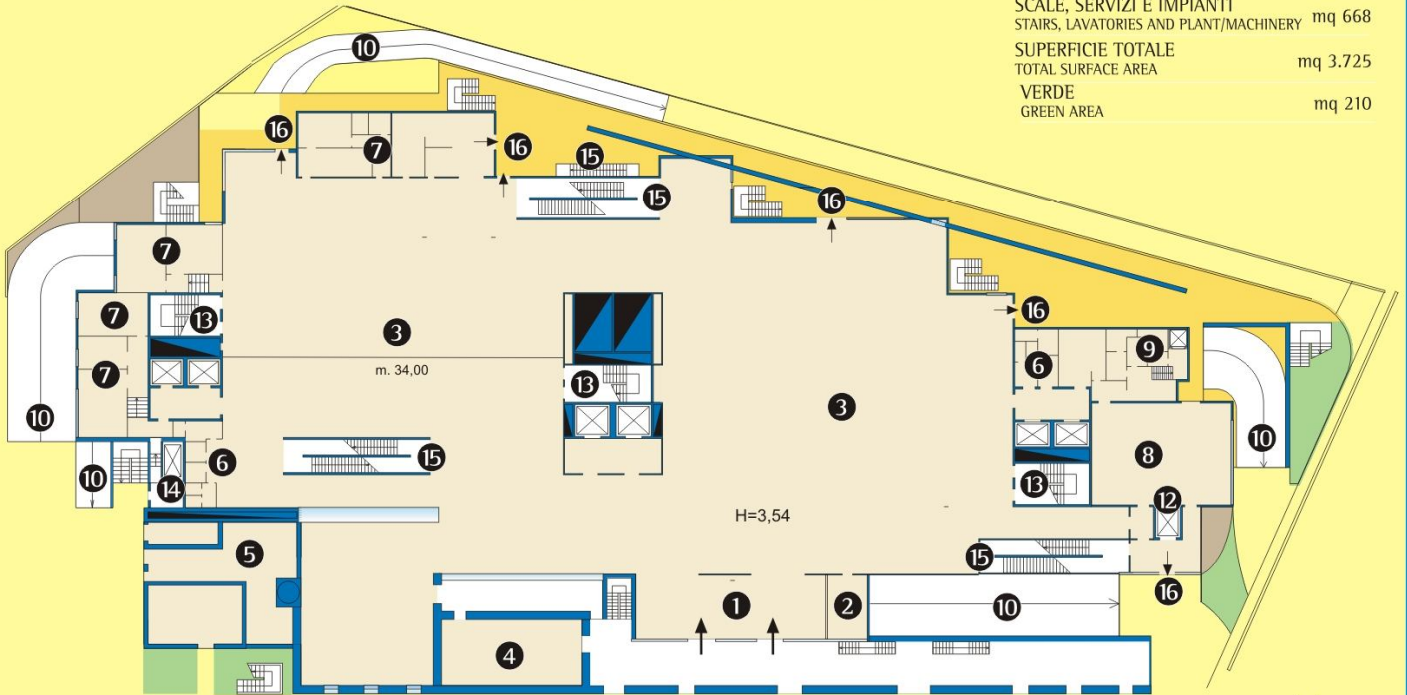




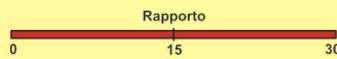
PIANO TERRA
GROUND FLOOR



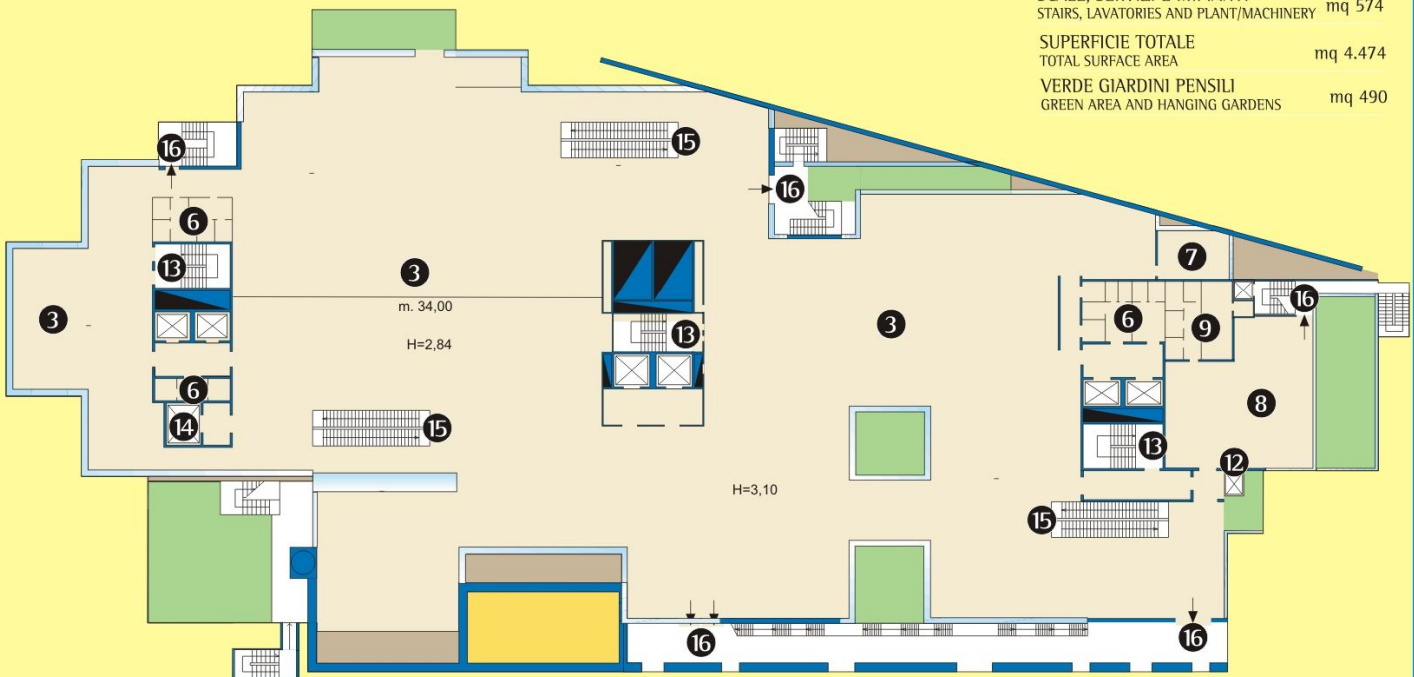
SUPERFICIE UTILE USEFUL SURFACE AREA	mq 3.057
SCALE, SERVIZI E IMPIANTI STAIRS, LAVATORIES AND PLANT/MACHINERY	mq 668
SUPERFICIE TOTALE TOTAL SURFACE AREA	mq 3.725
VERDE GREEN AREA	mq 210



1° PIANO
1st FLOOR



SUPERFICIE UTILE USEFUL SURFACE AREA	mq 3.900
SCALE, SERVIZI E IMPIANTI STAIRS, LAVATORIES AND PLANT/MACHINERY	mq 574
SUPERFICIE TOTALE TOTAL SURFACE AREA	mq 4.474
VERDE GIARDINI PENSILI GREEN AREA AND HANGING GARDENS	mq 490





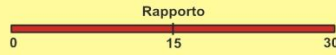
F1, ingresso da P.le Asia



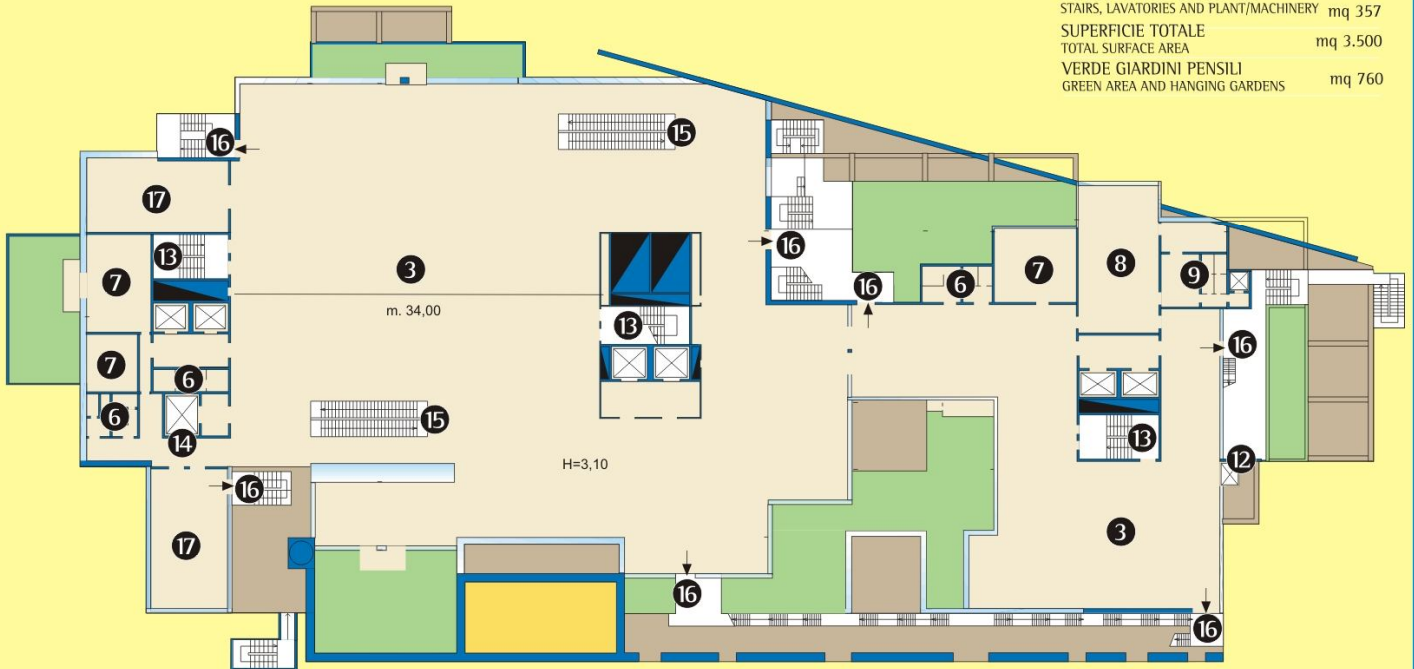
- ① Hall Ingresso - Entrance hall
- ② Guardaroba - Cloakroom
- ③ Spazi Espositivi - Exhibition spaces
- ④ Museo dello zolfo - Sulphur museum
- ⑤ Impianti tecnologici - Technological installations
- ⑥ Servizi - Lavatories
- ⑦ Uffici - Offices
- ⑧ Bar-ristoro / Bar-snack bar
- ⑨ Retro Bar - Rear room of bar
- ⑩ Rampe di accesso ai due parcheggi interrati
Access ramps to two underground parking lots
- ⑫ Ascensore panoramico con accesso indipendente, esterno, per autonomia d'uso per il ristorante al secondo piano
Panoramic lift with external access for independent use for second-floor restaurant
- ⑬ Gruppo scala e ascensore - Stairs and lifts
- ⑭ Montacarichi di servizio con accesso dall'esterno - Goods lift with external access
- ⑮ Scale mobili - Escalators
- ⑯ Uscite di Sicurezza - Emergency exits



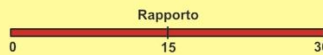
2° PIANO 2nd FLOOR



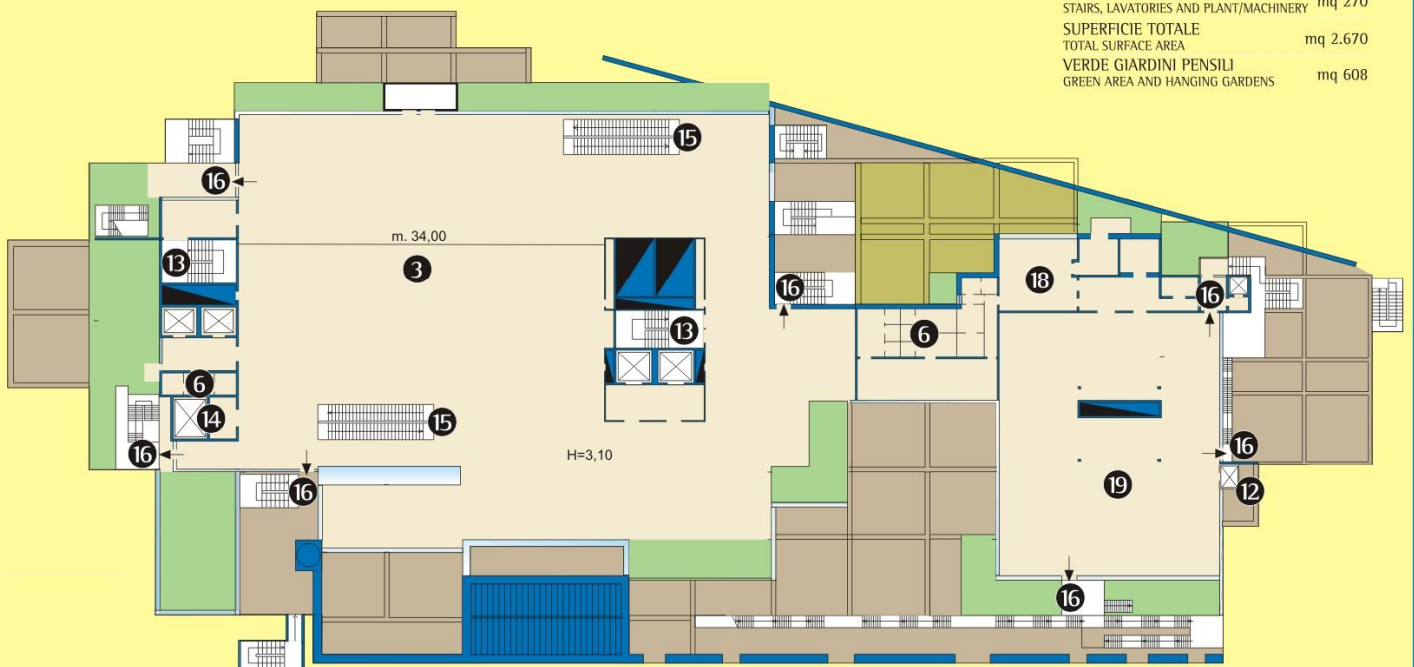
SUPERFICIE UTILE USEFUL SURFACE AREA	mq 3.143
SCALE, SERVIZI E IMPIANTI STAIRS, LAVATORIES AND PLANT/MACHINERY	mq 357
SUPERFICIE TOTALE TOTAL SURFACE AREA	mq 3.500
VERDE GIARDINI PENSIILI GREEN AREA AND HANGING GARDENS	mq 760



3° PIANO 3rd FLOOR

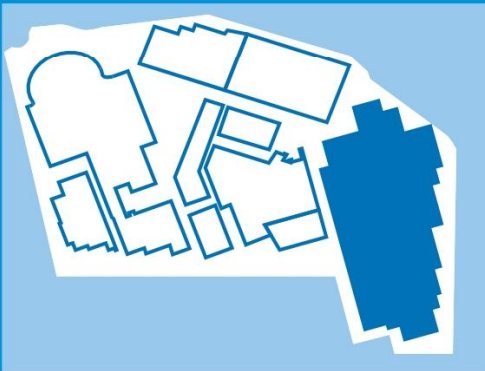


SUPERFICIE UTILE USEFUL SURFACE AREA	mq 2.400
SCALE, SERVIZI E IMPIANTI STAIRS, LAVATORIES AND PLANT/MACHINERY	mq 270
SUPERFICIE TOTALE TOTAL SURFACE AREA	mq 2.670
VERDE GIARDINI PENSIILI GREEN AREA AND HANGING GARDENS	mq 608





F1 Piano terra



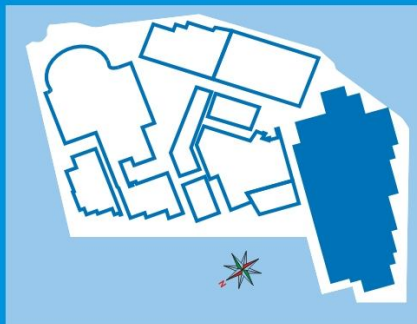
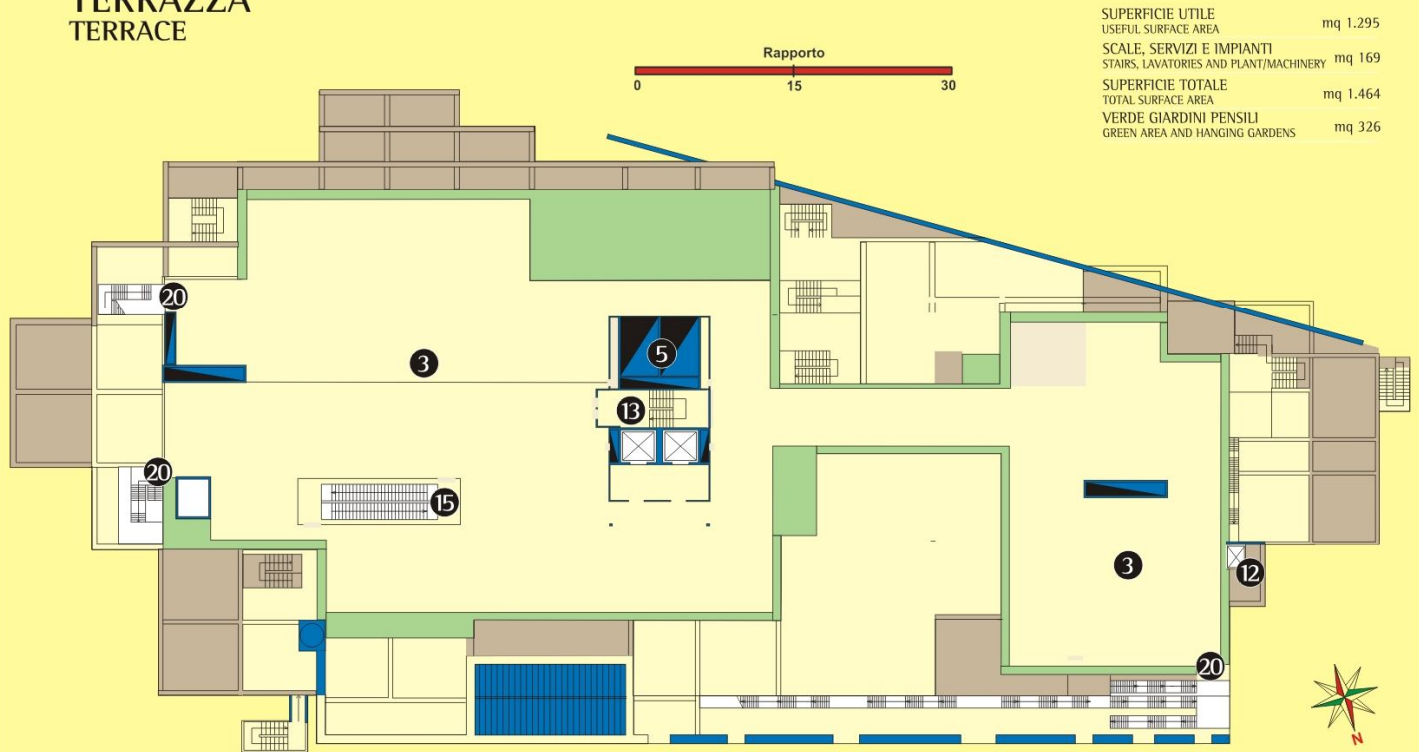
- ③ Spazi Espositivi - Exhibition spaces
- ⑥ Servizi - Lavatories
- ⑦ Uffici - Offices
- ⑫ Ascensore panoramico - Panoramic lift
- ⑬ Gruppo scala e ascensore - Stairs and lifts
- ⑭ Montacarichi di servizio con accesso dall'esterno - Goods lift with external access
- ⑮ Scale mobili - Escalators
- ⑯ Uscite di Sicurezza - Emergency exits
- ⑱ Cucina - Kitchen
- ⑲ Ristorante - Restaurant



F1 Piano primo



TERRAZZA
TERRACE



- ③ Spazi Espositivi all'aperto - Outdoor exhibition spaces
- ⑤ Impianti tecnologici - Technological installations
- ⑫ Ascensore panoramico - Panoramic lift
- ⑬ Gruppo scala e ascensore - Stairs and lifts
- ⑮ Scale mobili - Escalators
- ⑳ Scale di Sicurezza - Emergency stairs

F1 Terrazza

