



E1 Anfiteatro



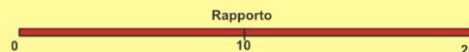
Sala E1 (135 posti)

L'Area Espositiva (E1-2-3-4-5-6-7) offre la possibilità di organizzare mostre e di promuovere tutte le attività di comunicazione, cultura e svago. Sono previsti un Museo delle arti, dei mestieri e delle tradizioni; laboratori di sperimentazione pluridisciplinare e professionale; luoghi di incontro e di cultura (libreria, biblioteca, laboratorio linguistico) ed una grande piazza gradonata all'aperto destinata a concerti, feste, spettacoli. Un piccolo teatro ed una galleria d'arte completano le strutture di questa articolata ed attrezzata area.

The Exhibition area (E1-2-3-4-5-6-7) makes it possible to organise trade shows and promote a complete range of communication, culture and leisure time activities. It contains a Museum of the Arts, Trades and Traditions, as well as multi-discipline and vocational experimentation workshops, meeting and cultural facilities (a book shop, a library, a language laboratory), and a large open-air terraced plaza for concerts, festivals and shows. A small theatre and an art gallery complete the facilities of this varied, well-equipped area.



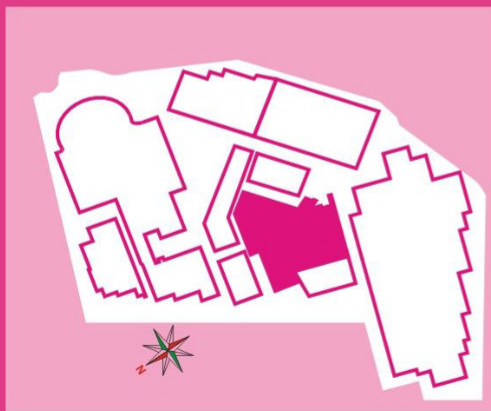
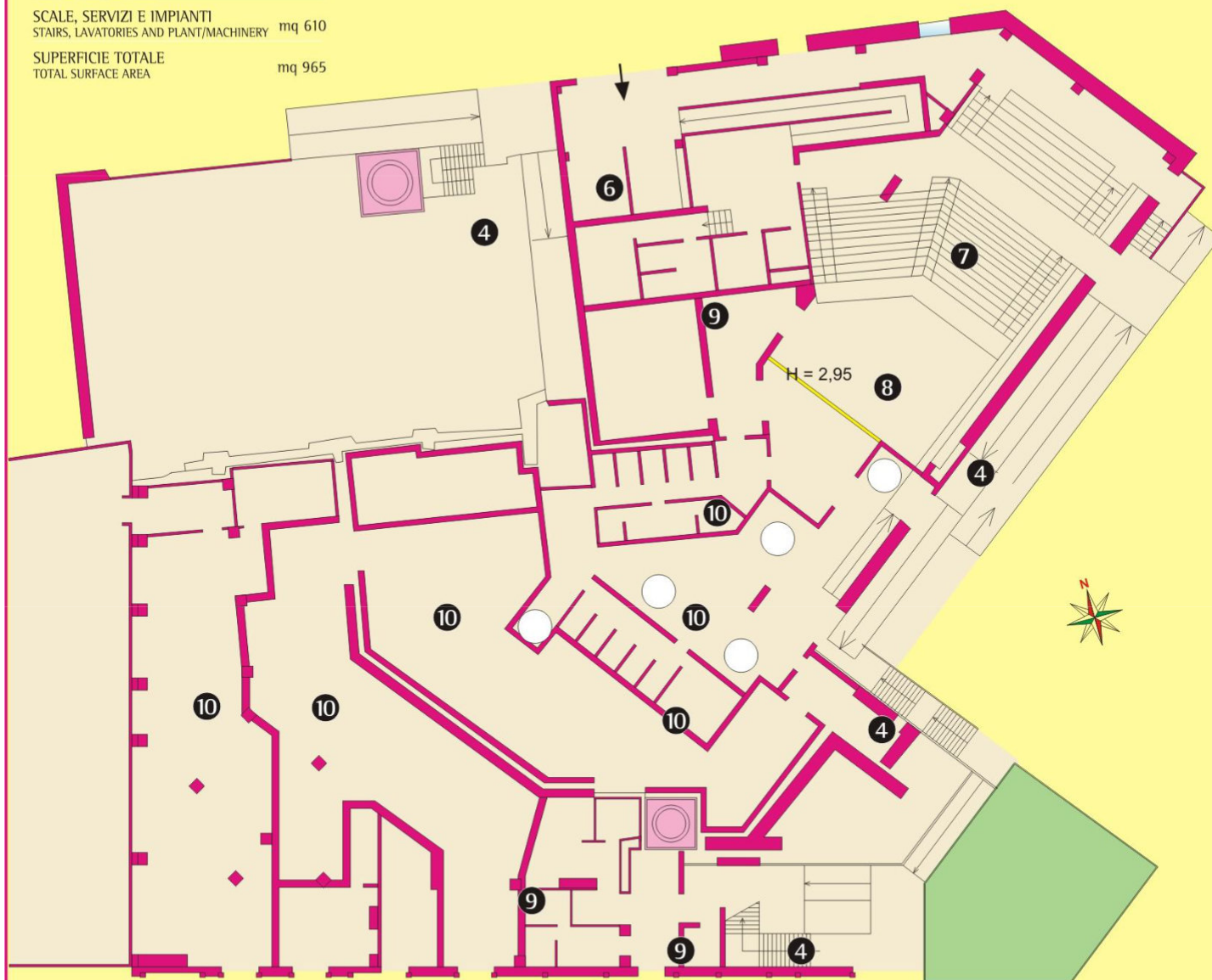
PIANO TERRA
GROUND FLOOR



SUPERFICIE UTILE
USEFUL SURFACE AREA mq 875

SCALE, SERVIZI E IMPIANTI
STAIRS, LAVATORIES AND PLANT/MACHINERY mq 610

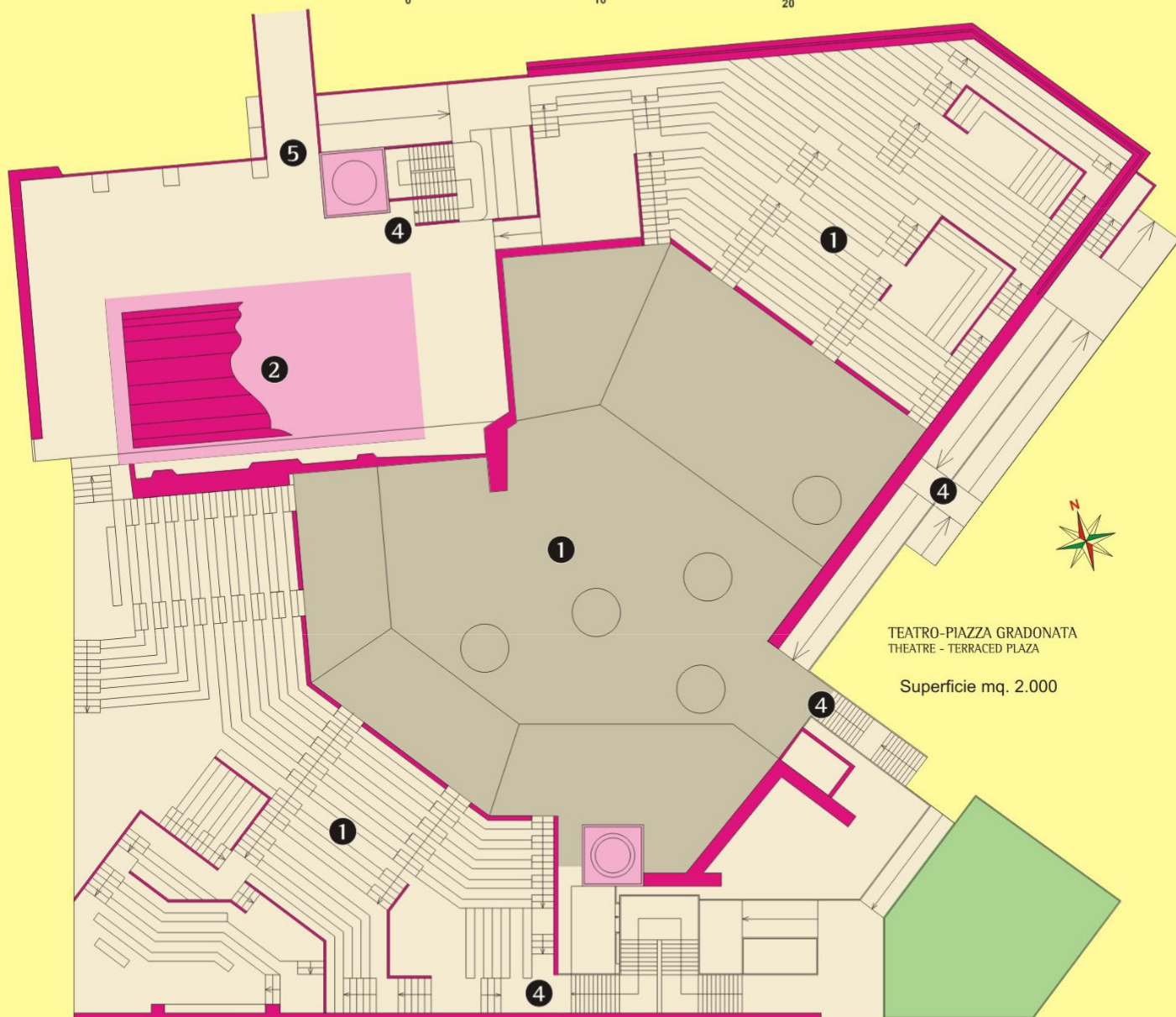
SUPERFICIE TOTALE
TOTAL SURFACE AREA mq 965



- ④ Accessi (rampa e scale) - Accesses (ramp and stairs)
- ⑥ Ingresso - Biglietteria / Entrance - Ticket window
- ⑦ Sala Gradonata. Posti: n. 161 + n. 5 per disabili
Terrace room. Seats: 161 + 5 for the disabled
- ⑧ Palcoscenico - Stage
- ⑨ Servizi - Lavatories
- ⑩ Spazi Tecnici (camerini, servizi, depositi, locali impianti, ecc.)
Technical spaces (changing rooms, lavatories, storage, plant/machinery rooms, etc.)



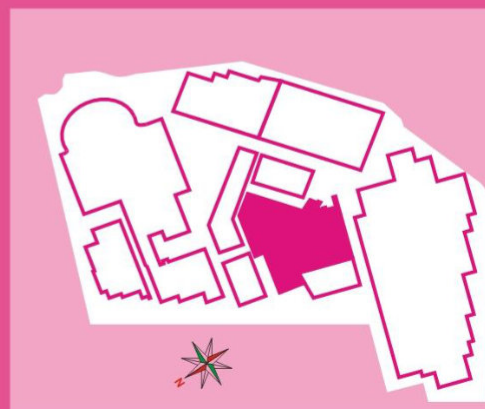
PIAZZA GRADONATA
TERRACED PLAZA



TEATRO-PIAZZA GRADONATA
THEATRE - TERRACED PLAZA

Superficie mq. 2.000

- ❶ Piazza gradonata (spettacoli all'aperto, incontri di gruppo, concerti, musica, recitals, ecc.)
Posti: n. 1500 circa (gradoni e sezione inclinata)
Seats: approximately 1500 (tiers plus sloping section)
Disappearing stage equipment
- ❷ Spazio Scenografico - Stage area
- ❹ Accessi (rampe e scale) - Accesses (ramps and stairs)
- ❺ Collegamento con l'edificio E3 - Connection with building E3





area espositiva exhibition area



PIANO TERRA
GROUND FLOOR



SUPERFICIE UTILE
USEFUL SURFACE AREA mq 270

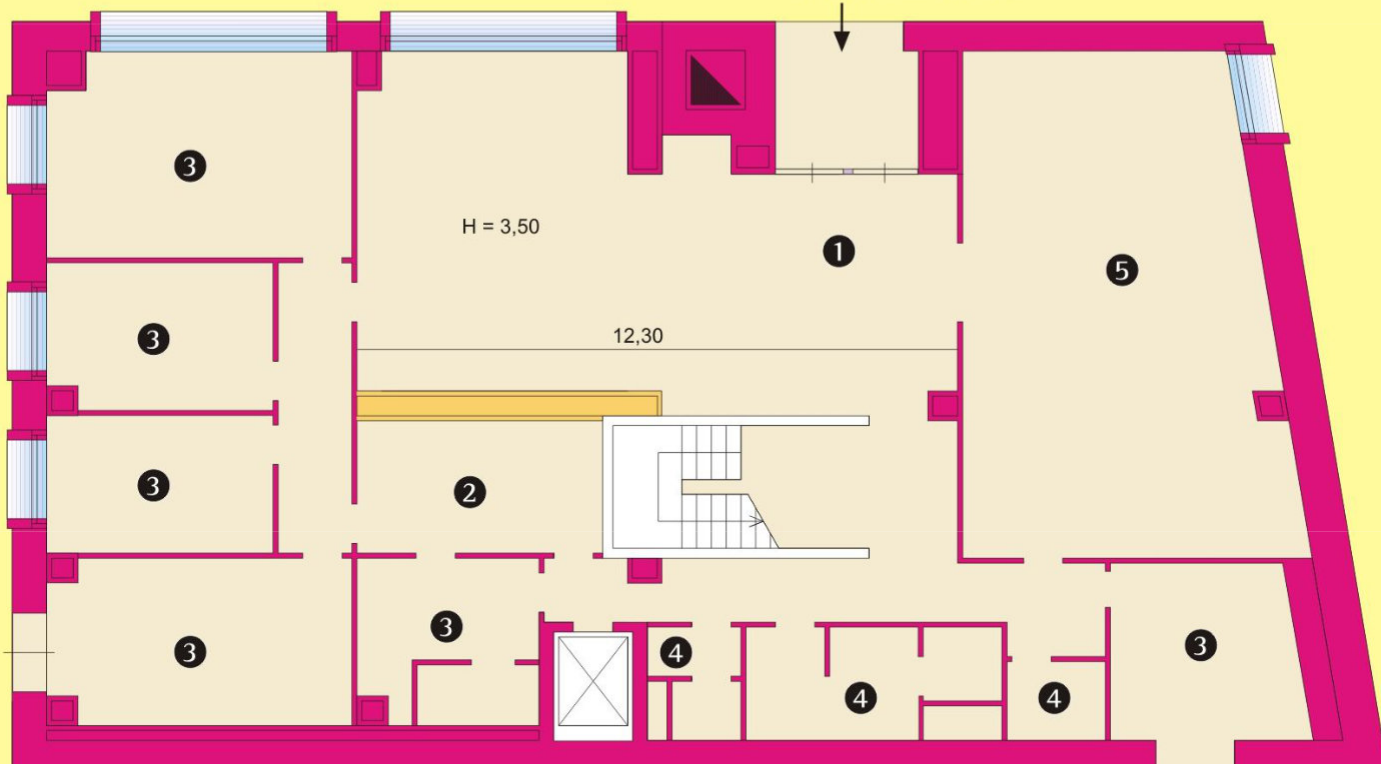
SCALE, SERVIZI E IMPIANTI
STAIRS, LAVATORIES AND PLANT/MACHINERY mq 40

SUPERFICIE TOTALE
TOTAL SURFACE AREA mq 310

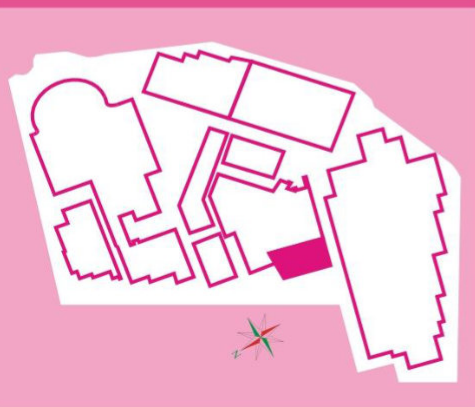
UFFICI DIREZIONALI



Ingresso da P.le Asia

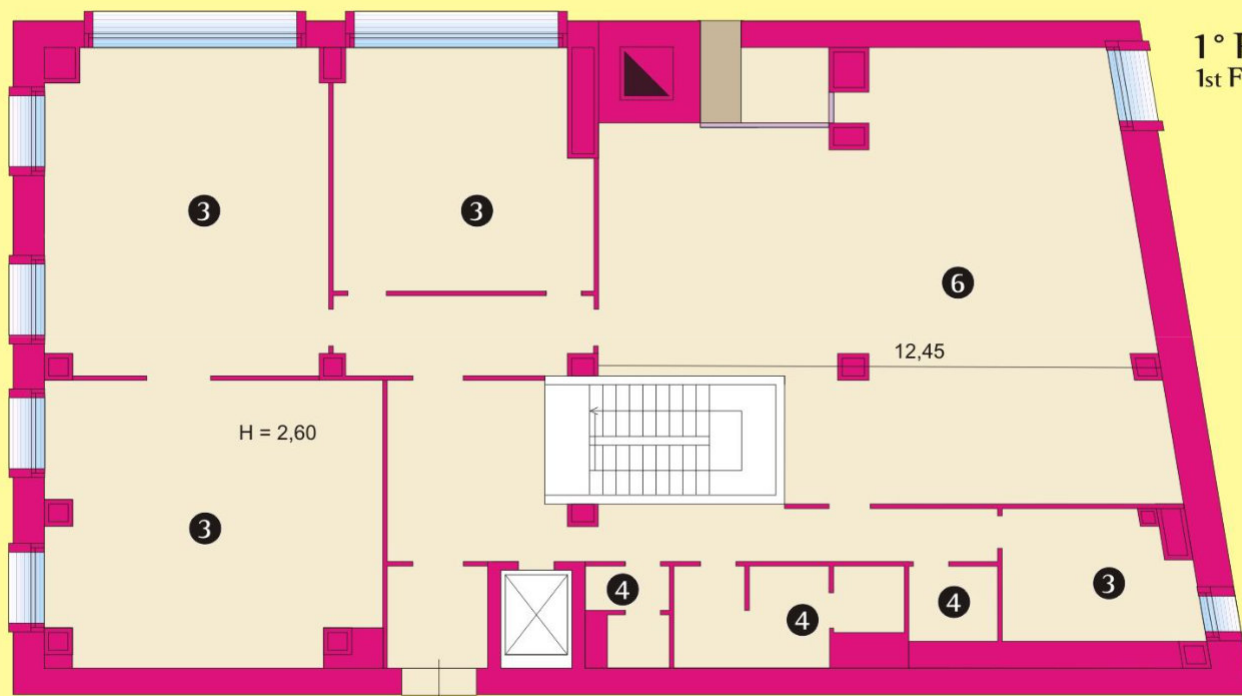


- ① Hall
- ② Informazioni e Biglietteria - Information and ticket window
- ③ Uffici - Offices
- ④ Servizi - Lavatories
- ⑤ Sala Stampa - Press room





area espositiva exhibition area



1° PIANO
1st FLOOR

SUPERFICIE UTILE
USEFUL SURFACE AREA mq 264

SCALE, SERVIZI E IMPIANTI
STAIRS, LAVATORIES AND PLANT/MACHINERY mq 51

SUPERFICIE TOTALE
TOTAL SURFACE AREA mq 315



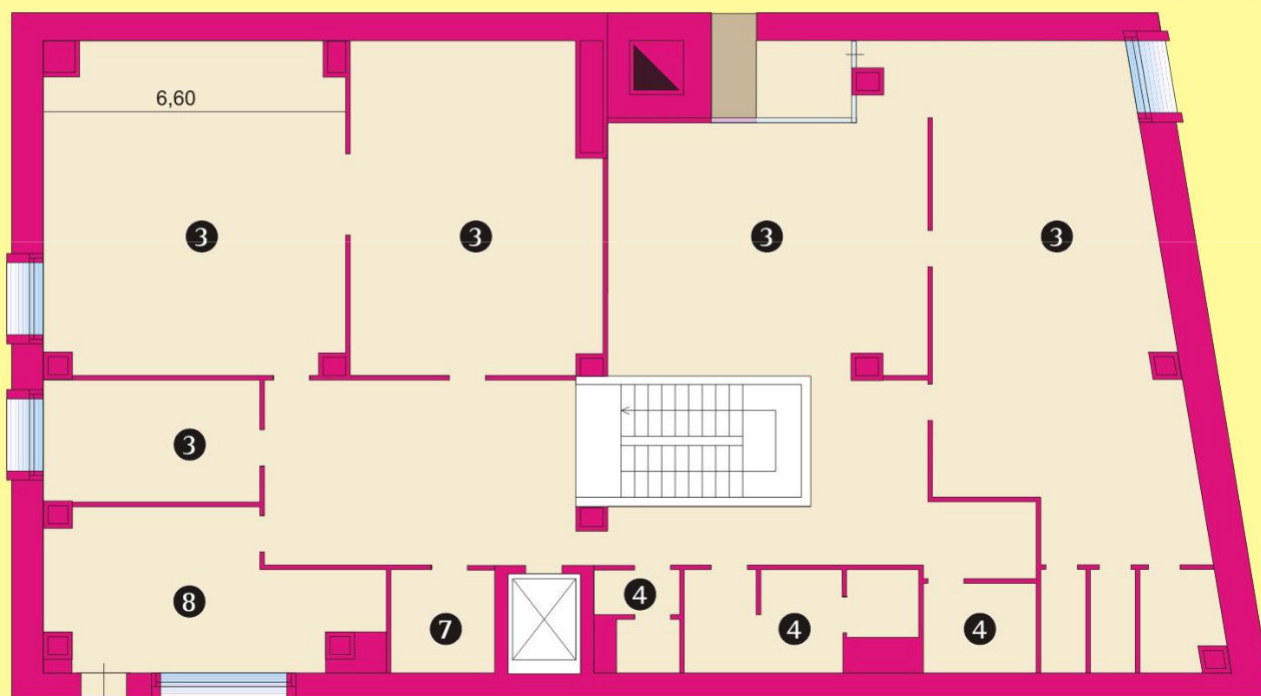
- ③ Uffici - Offices
- ④ Servizi - Lavatories
- ⑥ Sala Controllo generale, Sicurezza ed Incendio
General control, security and fire prevention room
- ⑦ Macchine ascensori - Lift machinery
- ⑧ Sala Regia Teatro all'aperto - Piazza Gradonata
Control cubicle for open-air theatre - terraced plaza

SUPERFICIE UTILE
USEFUL SURFACE AREA mq 256

SCALE, SERVIZI E IMPIANTI
STAIRS, LAVATORIES AND PLANT/MACHINERY mq 64

SUPERFICIE TOTALE
TOTAL SURFACE AREA mq 320

2° PIANO
2nd FLOOR





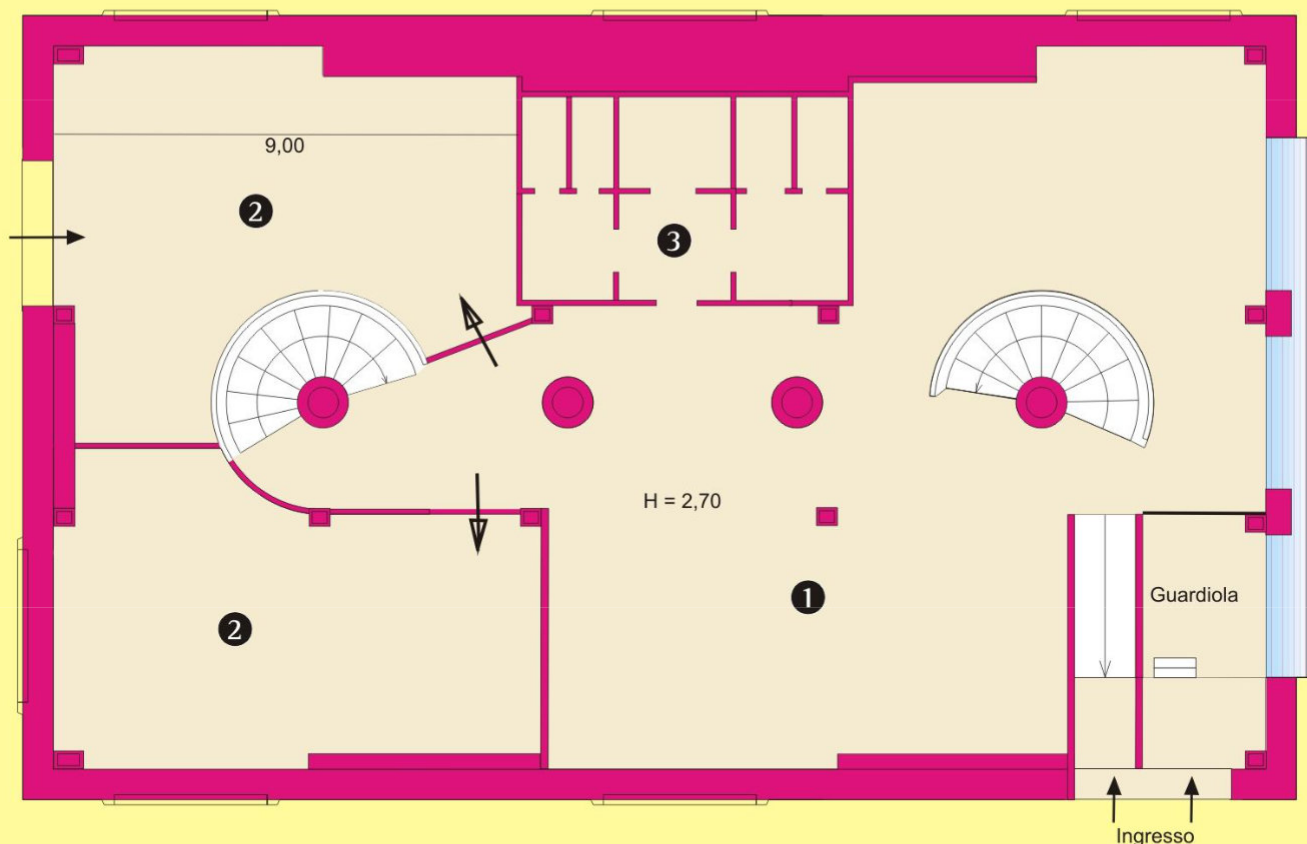
PIANO TERRA
PIANO TERRA

Palazzina dell'Innovazione

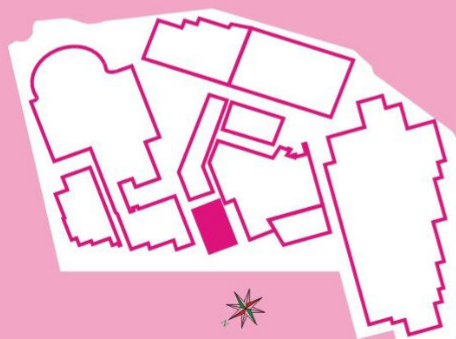
SUPERFICIE UTILE
USEFUL SURFACE AREA mq 253

SCALE, SERVIZI E IMPIANTI
STAIRS, LAVATORIES AND PLANT/MACHINERY mq 52

SUPERFICIE TOTALE
TOTAL SURFACE AREA mq 305



- ① Reception
- ② Sala riunioni
- ③ Servizi - Lavatories
- ⑤ Spazi espositivi



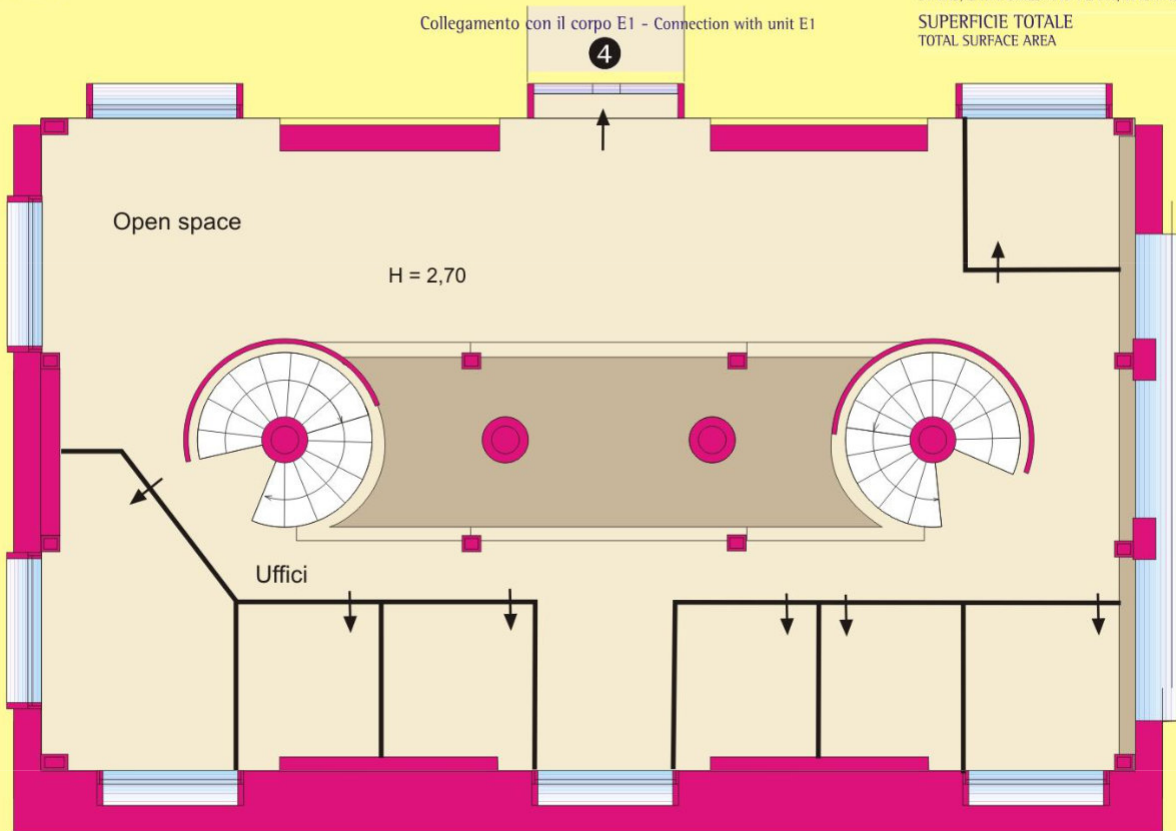


area espositiva exhibition area

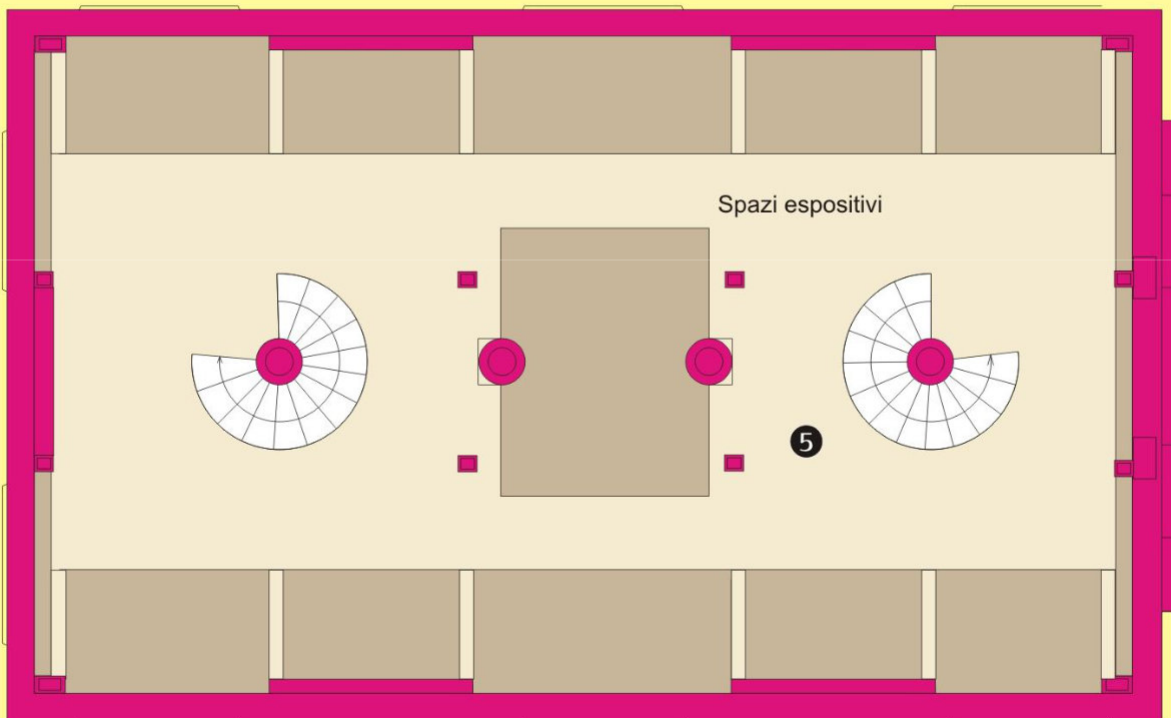


1° PIANO
1° PIANO

SUPERFICIE UTILE
USEFUL SURFACE AREA mq 251
SCALE, SERVIZI E IMPIANTI
STAIRS, LAVATORIES AND PLANT/MACHINERY mq 27
SUPERFICIE TOTALE
TOTAL SURFACE AREA mq 278



2° PIANO
2nd FLOOR





Veduta panoramica

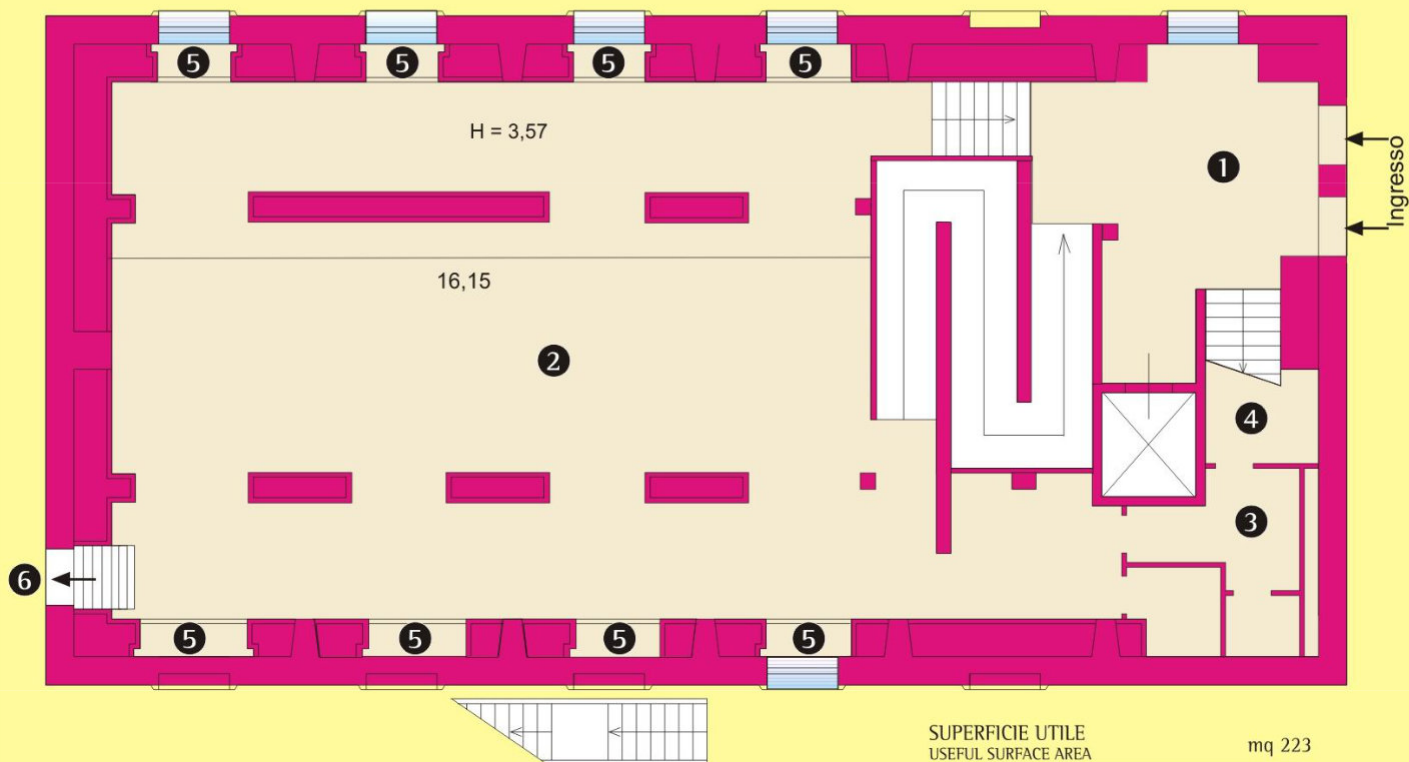


Spazi a verde





PIANO TERRA
GROUND FLOOR

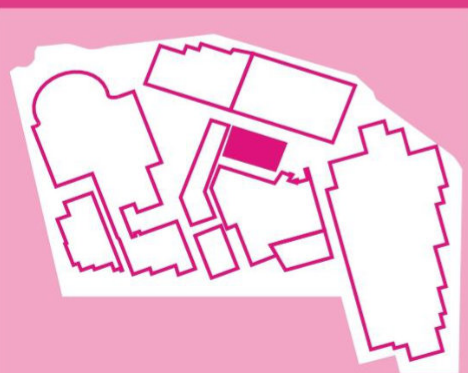


SUPERFICIE UTILE
USEFUL SURFACE AREA mq 223

SCALE, SERVIZI E IMPIANTI
STAIRS, LAVATORIES AND PLANT/MACHINERY mq 103

SUPERFICIE TOTALE
TOTAL SURFACE AREA mq 326

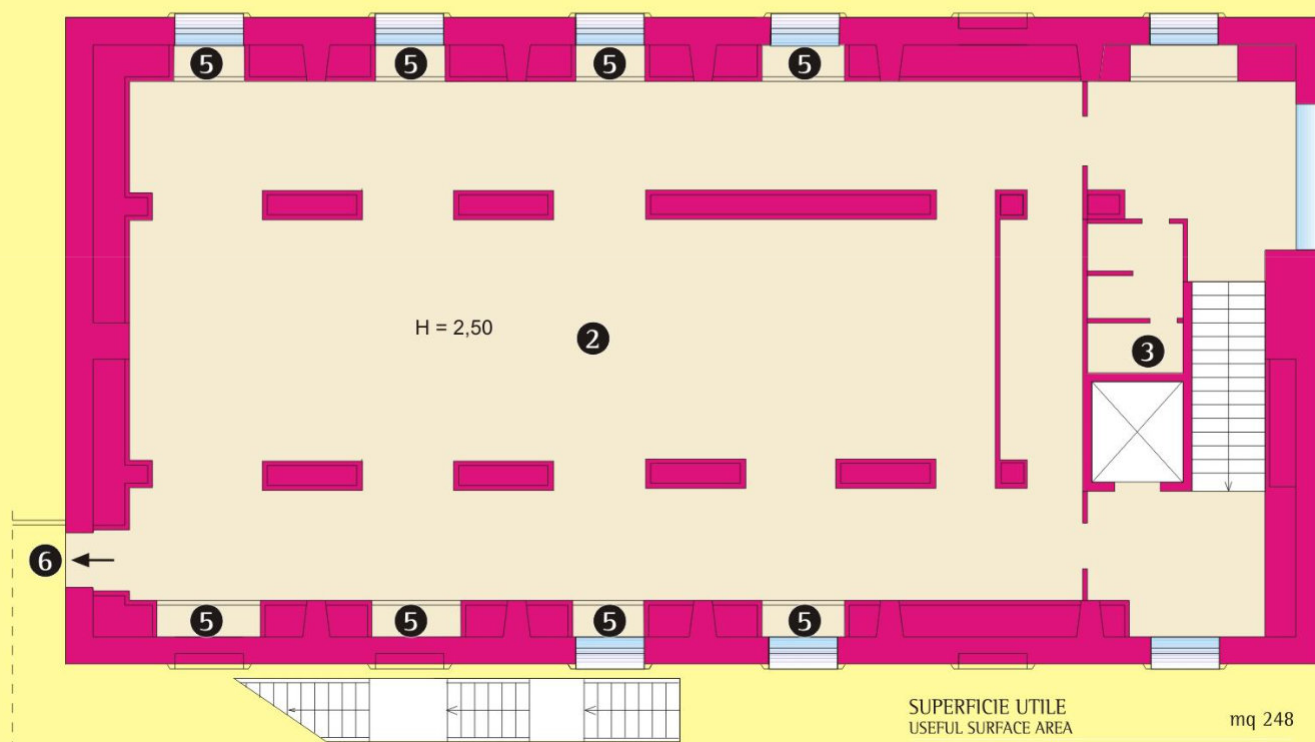
- ① Hall
- ② Spazio Espositivo - Exhibition space
- ③ Servizi - Lavatories
- ④ Macchine ascensore - Lift machinery
- ⑤ Vetrine Espositive - Display windows
- ⑥ Uscite di Sicurezza - Emergency exits
- ⑦ Ufficio - Office



E4 Galleria d'arte



1° PIANO
1st FLOOR



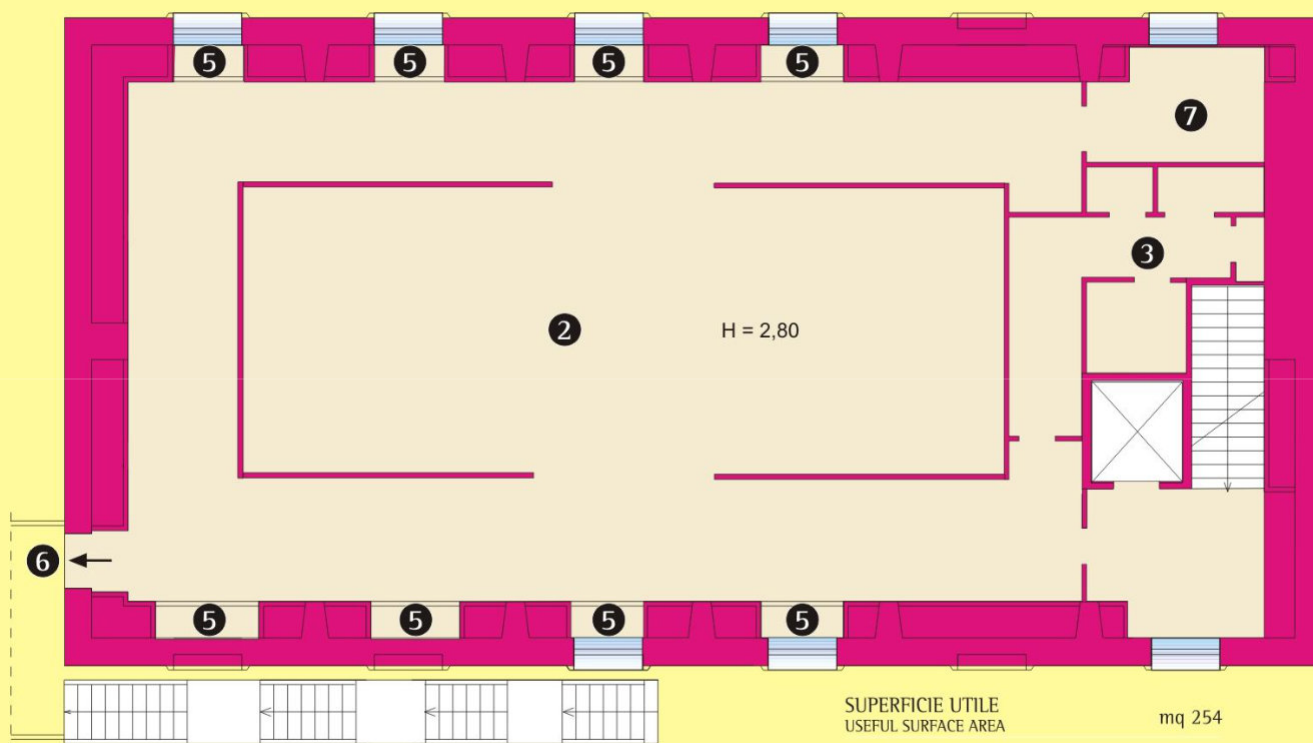
SUPERFICIE UTILE
USEFUL SURFACE AREA mq 248

SCALE, SERVIZI E IMPIANTI
STAIRS, LAVATORIES AND PLANT/MACHINERY mq 72

SUPERFICIE TOTALE
TOTAL SURFACE AREA mq 320



2° PIANO
2nd FLOOR



SUPERFICIE UTILE
USEFUL SURFACE AREA mq 254

SCALE, SERVIZI E IMPIANTI
STAIRS, LAVATORIES AND PLANT/MACHINERY mq 77

SUPERFICIE TOTALE
TOTAL SURFACE AREA mq 331



area espositiva exhibition area

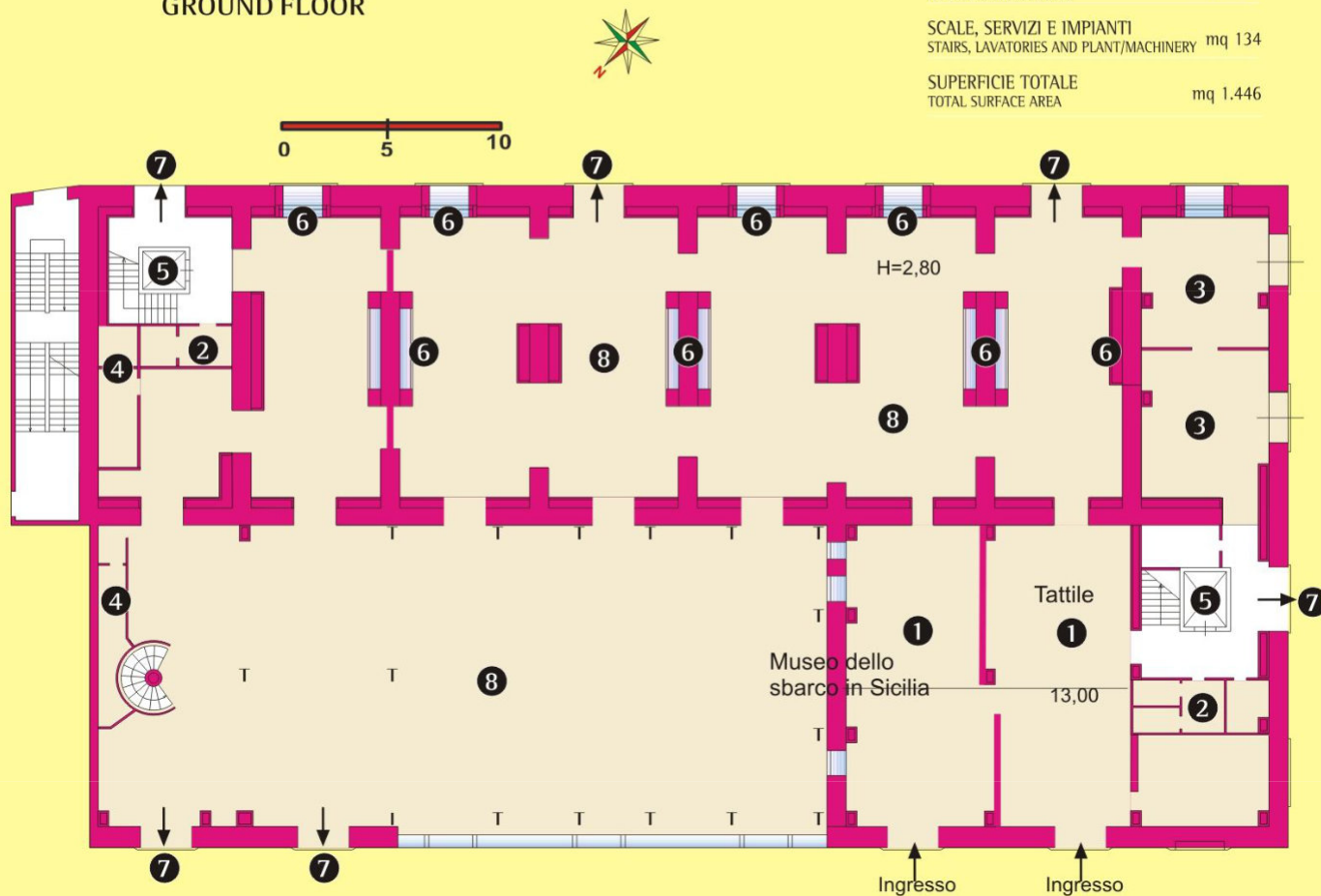


PIANO TERRA GROUND FLOOR

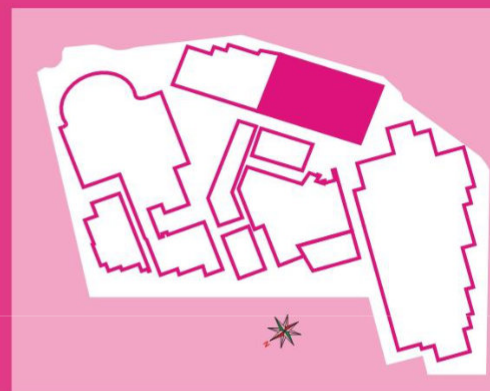
SUPERFICIE UTILE
USEFUL SURFACE AREA mq 1.312

SCALE, SERVIZI E IMPIANTI
STAIRS, LAVATORIES AND PLANT/MACHINERY mq 134

SUPERFICIE TOTALE
TOTAL SURFACE AREA mq 1.446



Ingresso Museo dello Sbarco



- ① Hall d'ingresso
- ② Servizi
- ③ Ricevimento, deposito e smistamento materiale
- ④ Impianti
- ⑤ Gruppo scale ed ascensori
- ⑥ Vettrine Espositive
- ⑦ Uscite di Sicurezza
- ⑧ Spazi Espositivi
- ⑨ Uffici



area espositiva exhibition area

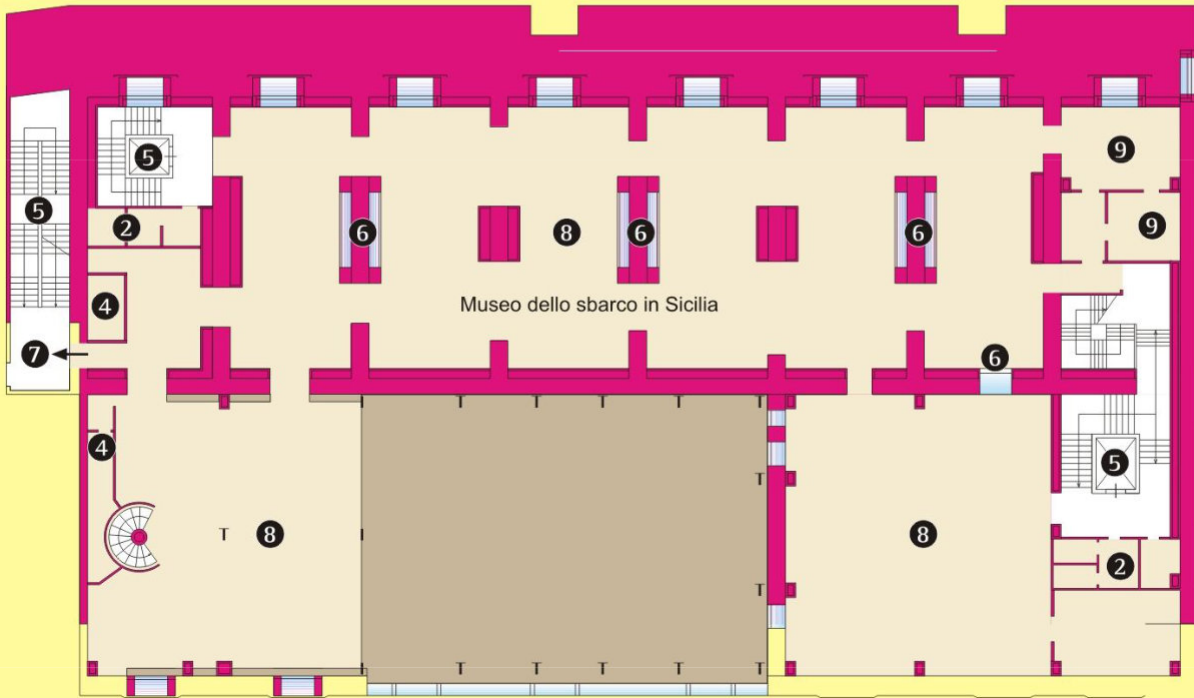


1° PIANO 1st FLOOR

SUPERFICIE UTILE
USEFUL SURFACE AREA mq 1.092

SCALE, SERVIZI E IMPIANTI
STAIRS, LAVATORIES AND PLANT/MACHINERY mq 128

SUPERFICIE TOTALE
TOTAL SURFACE AREA mq 1.220

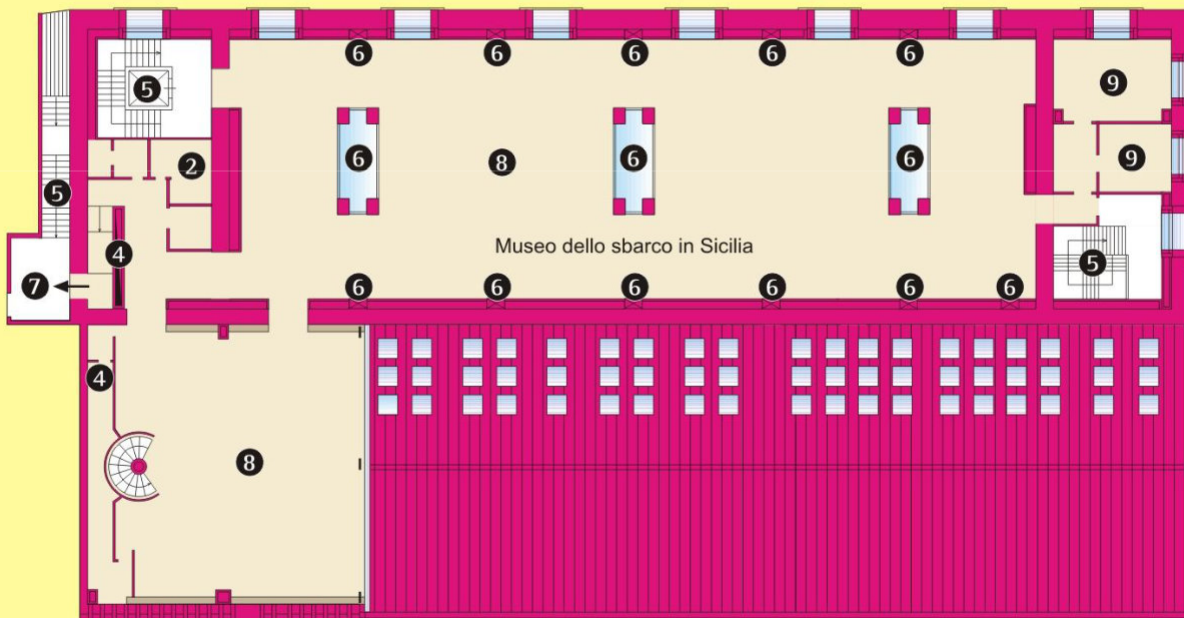


2° PIANO 2nd FLOOR

SUPERFICIE UTILE
USEFUL SURFACE AREA mq 834

SCALE, SERVIZI E IMPIANTI
STAIRS, LAVATORIES AND PLANT/MACHINERY mq 116

SUPERFICIE TOTALE
TOTAL SURFACE AREA mq 950





Museo dello sbarco in Sicilia

**Nulla è perduto con la pace.
Tutto può essere perduto
con la guerra**

Pio XII



Museo dello sbarco in Sicilia

Museo dello sbarco in Sicilia



Museo dello sbarco in Sicilia



E5 - Sala Tattile





Museo del Cinema



Museo del Cinema



Museo del Cinema



area espositiva exhibition area

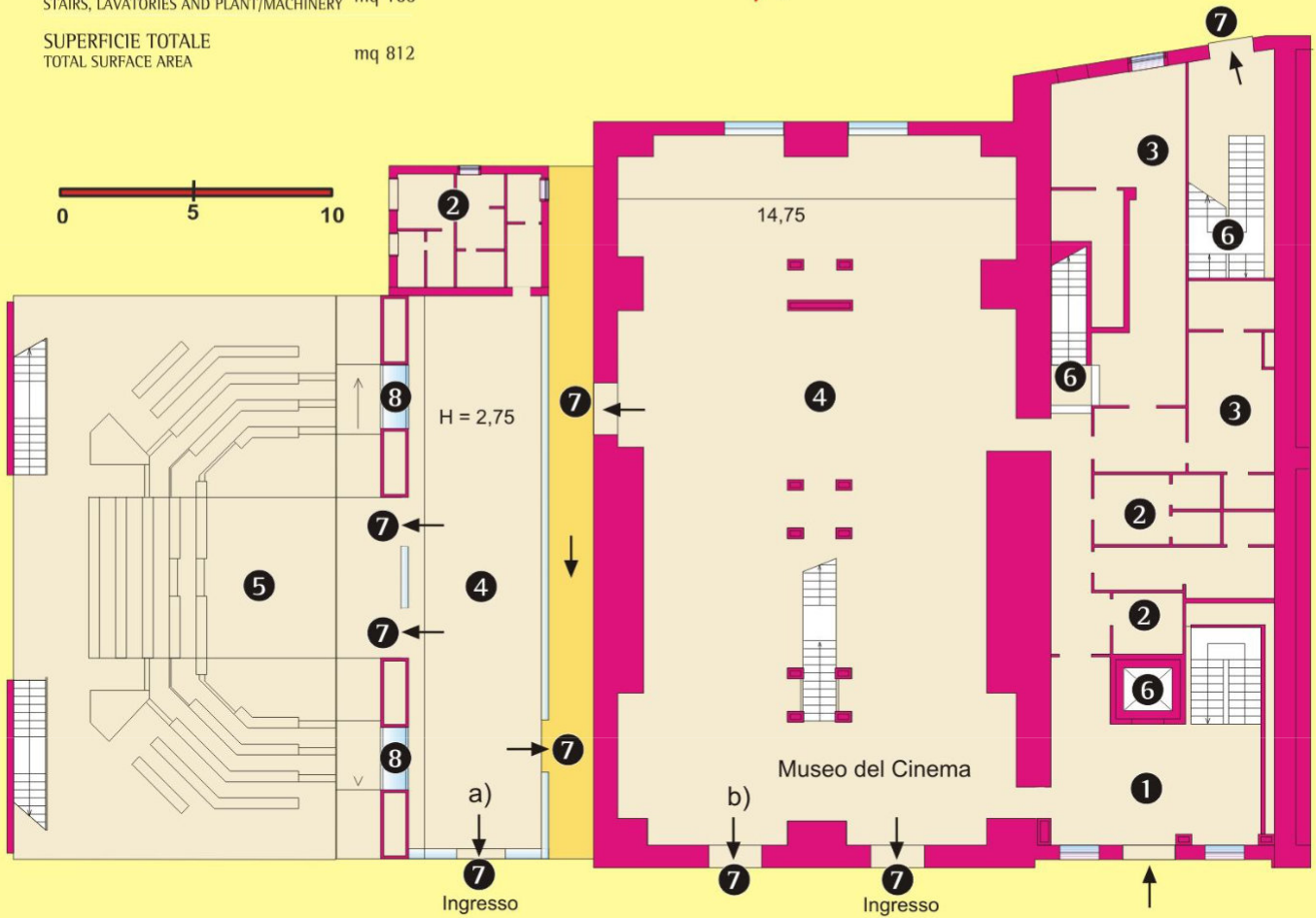
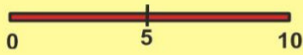
E6

SUPERFICIE UTILE
USEFUL SURFACE AREA mq 652

SCALE, SERVIZI E IMPIANTI
STAIRS, LAVATORIES AND PLANT/MACHINERY mq 160

SUPERFICIE TOTALE
TOTAL SURFACE AREA mq 812

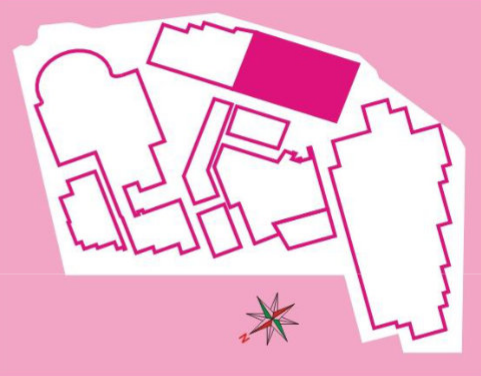
PIANO TERRA GROUND FLOOR



Museo del Cinema



30



- ① Hall d'ingresso - Entrance hall
- ② Servizi - Lavatories
- ③ Uffici - Offices
- ④ Spazi Espositivi - Exhibition spaces
- ⑤ Aula all'aperto / Open-air classroom
- ⑥ Gruppo scala ed ascensore - Stairs and lifts
- ⑦ Uscite di Sicurezza - Emergency exits
- ⑧ Vetrine Espositive - Display windows
- ⑨ Scale di Collegamento - Connecting stairs



area espositiva exhibition area

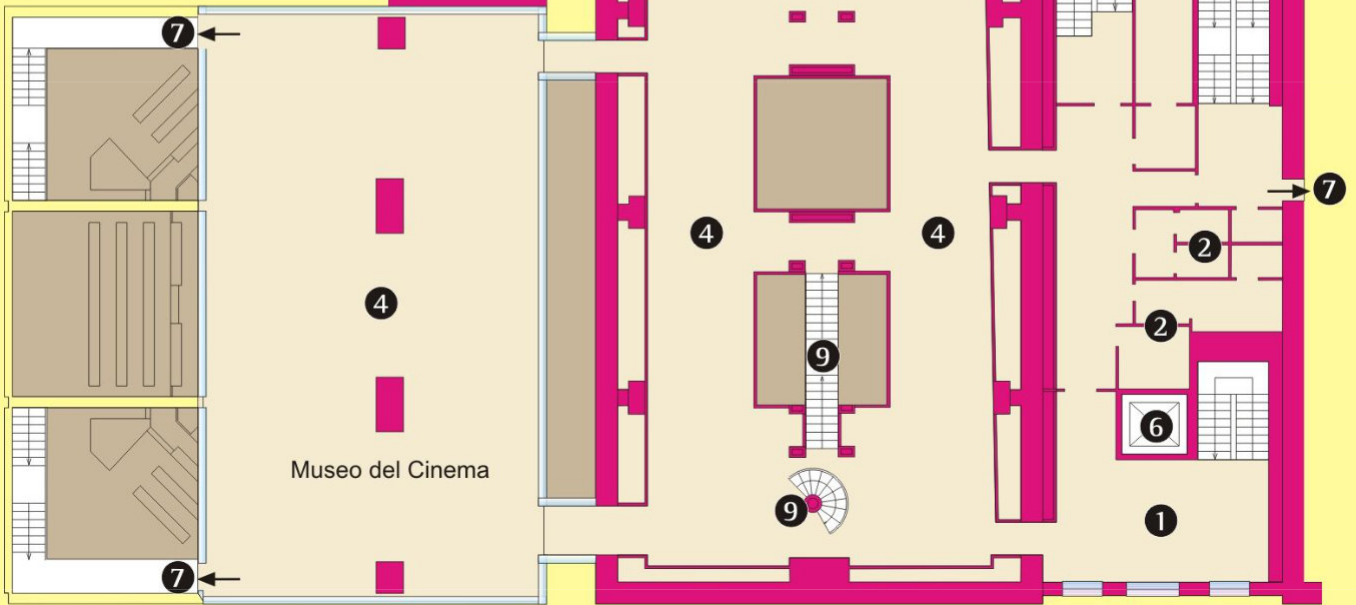
E6

1° PIANO 1st FLOOR

SUPERFICIE UTILE
USEFUL SURFACE AREA mq 623

SCALE, SERVIZI E IMPIANTI
STAIRS, LAVATORIES AND PLANT/MACHINERY mq 162

SUPERFICIE TOTALE
TOTAL SURFACE AREA mq 785

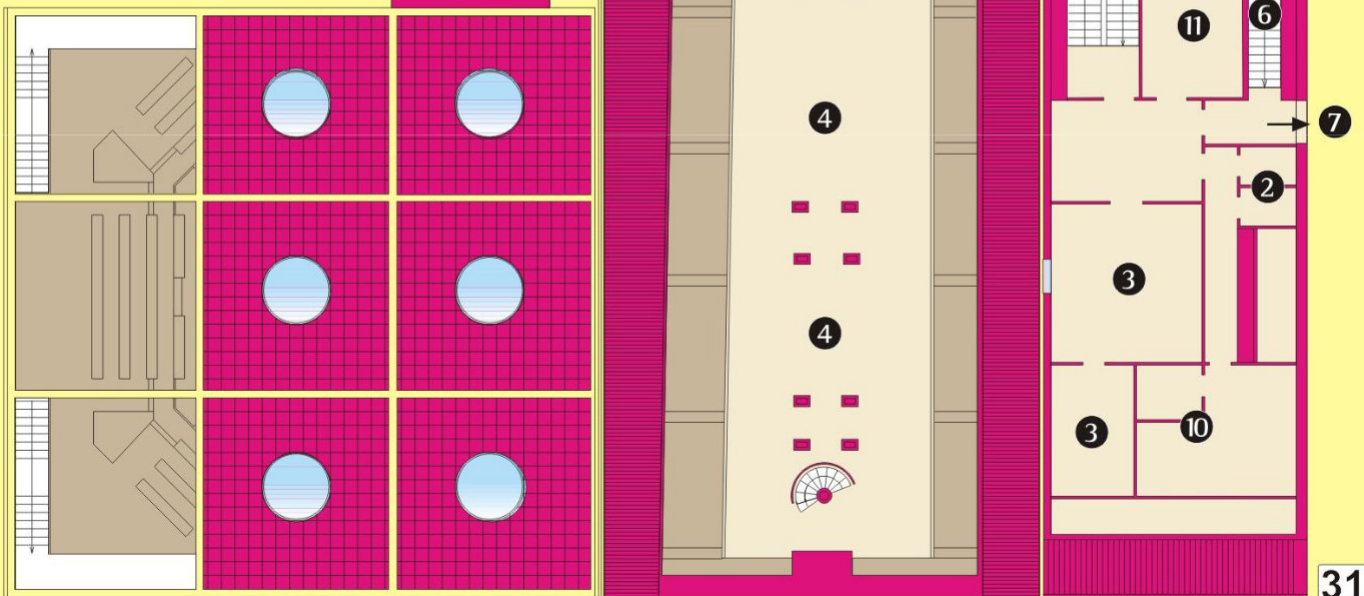


2° PIANO 2nd FLOOR

SUPERFICIE UTILE
USEFUL SURFACE AREA mq 260

SCALE, SERVIZI E IMPIANTI
STAIRS, LAVATORIES AND PLANT/MACHINERY mq 66

SUPERFICIE TOTALE
TOTAL SURFACE AREA mq 326

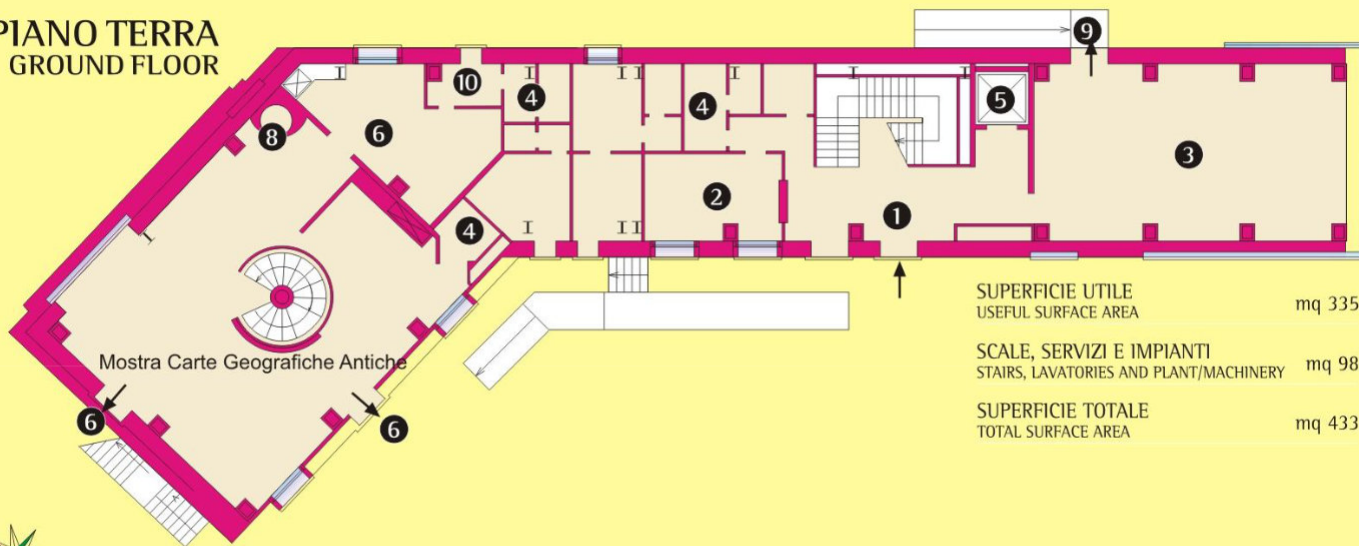




area espositiva exhibition area



PIANO TERRA GROUND FLOOR



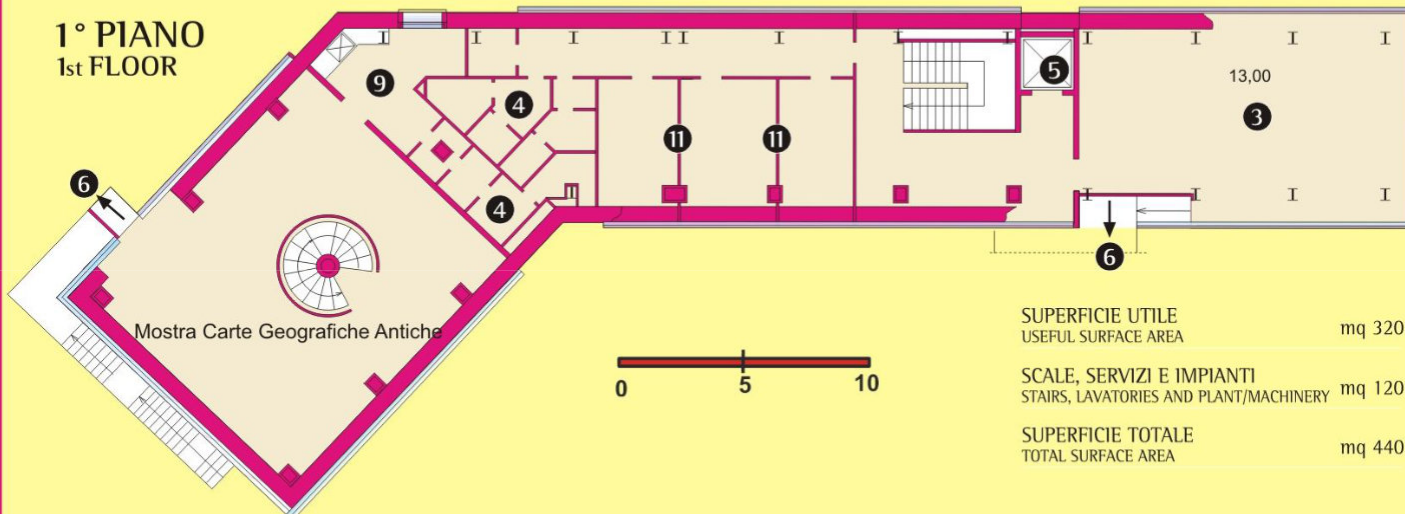
SUPERFICIE UTILE
USEFUL SURFACE AREA mq 335

SCALE, SERVIZI E IMPIANTI
STAIRS, LAVATORIES AND PLANT/MACHINERY mq 98

SUPERFICIE TOTALE
TOTAL SURFACE AREA mq 433



1° PIANO 1st FLOOR

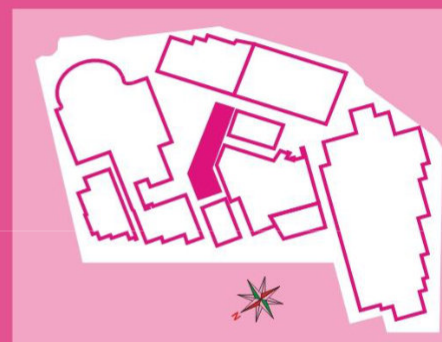


SUPERFICIE UTILE
USEFUL SURFACE AREA mq 320

SCALE, SERVIZI E IMPIANTI
STAIRS, LAVATORIES AND PLANT/MACHINERY mq 120

SUPERFICIE TOTALE
TOTAL SURFACE AREA mq 440

Mostra Carte Geografiche Antiche



- ① Hall Ingresso - Entrance hall
- ② Segreteria e Informazioni - Secretariat and information office
- ③ Aula (seminari, laboratori) - Classroom (seminars, workshops)
- ④ Servizi - Lavatories
- ⑤ Gruppo scala ed ascensore - Stairs and lifts
- ⑥ Uscite di sicurezza - Emergency exits
- ⑨ Cucina - Kitchen
- ⑩ Ingresso servizio e spogliatoi - Service entrance and changing rooms
- ⑪ Uffici - Offices