



E1 Anfiteatro



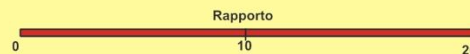
Sala E1 (166 posti)

L'Area Espositiva (E1-2-3-4-5-6-7) offre la possibilità di organizzare mostre e di promuovere tutte le attività di comunicazione, cultura e svago. Sono previsti un Museo delle arti, dei mestieri e delle tradizioni; laboratori di sperimentazione pluridisciplinare e professionale; luoghi di incontro e di cultura (libreria, biblioteca, laboratorio linguistico) ed una grande piazza gradonata all'aperto destinata a concerti, feste, spettacoli. Un piccolo teatro ed una galleria d'arte completano le strutture di questa articolata ed attrezzata area.

The Exhibition area (E1-2-3-4-5-6-7) makes it possible to organise trade shows and promote a complete range of communication, culture and leisure time activities. It contains a Museum of the Arts, Trades and Traditions, as well as multi-discipline and vocational experimentation workshops, meeting and cultural facilities (a book shop, a library, a language laboratory), and a large open-air terraced plaza for concerts, festivals and shows. A small theatre and an art gallery complete the facilities of this varied, well-equipped area.



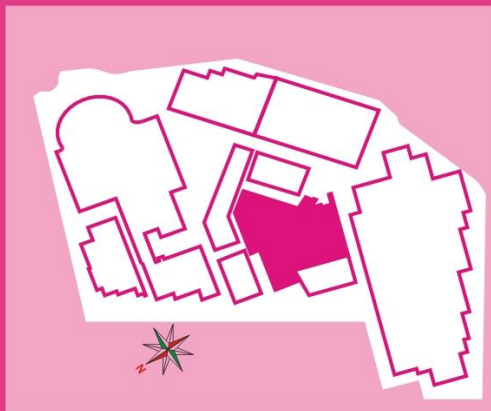
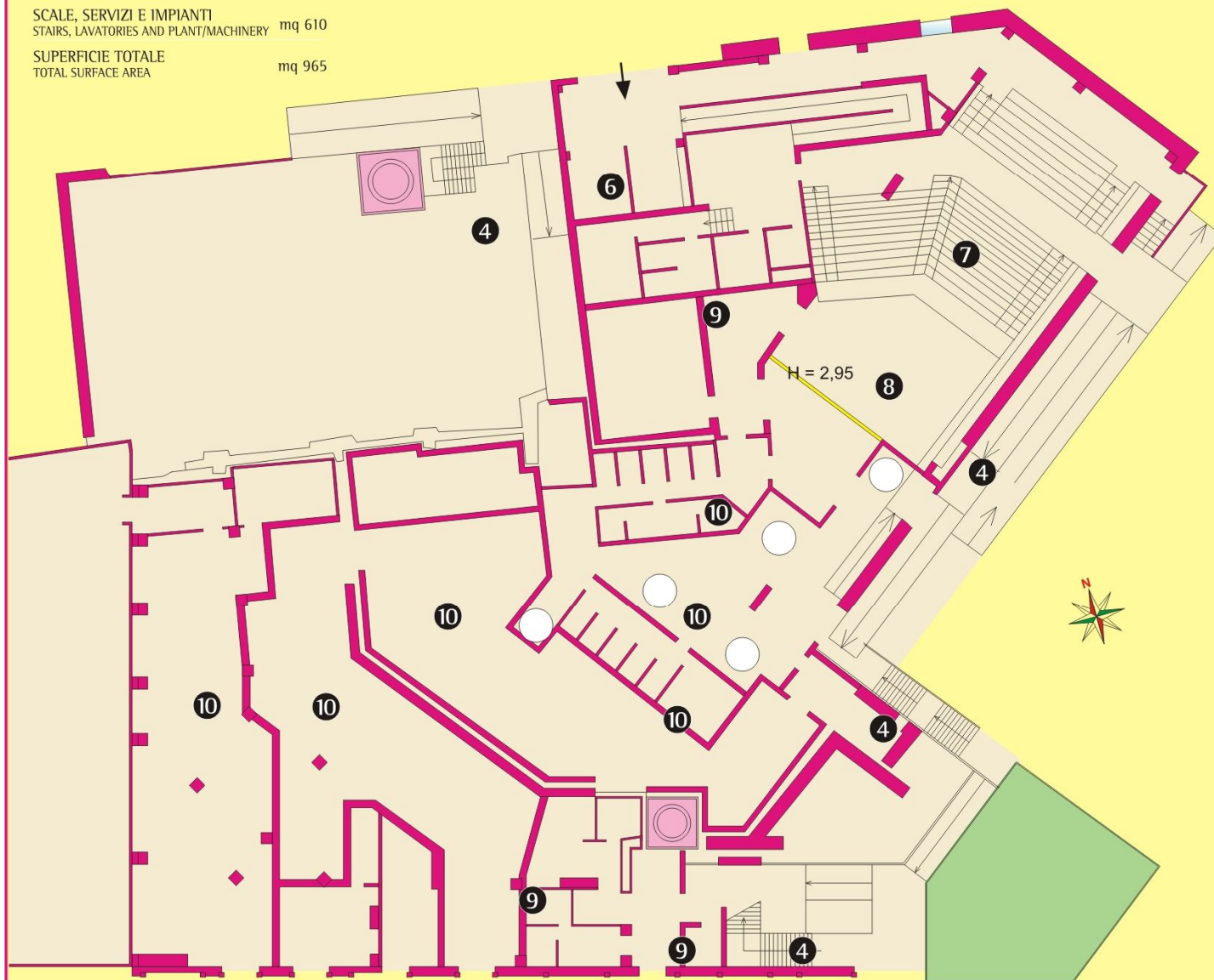
PIANO TERRA
GROUND FLOOR



SUPERFICIE UTILE
USEFUL SURFACE AREA mq 875

SCALE, SERVIZI E IMPIANTI
STAIRS, LAVATORIES AND PLANT/MACHINERY mq 610

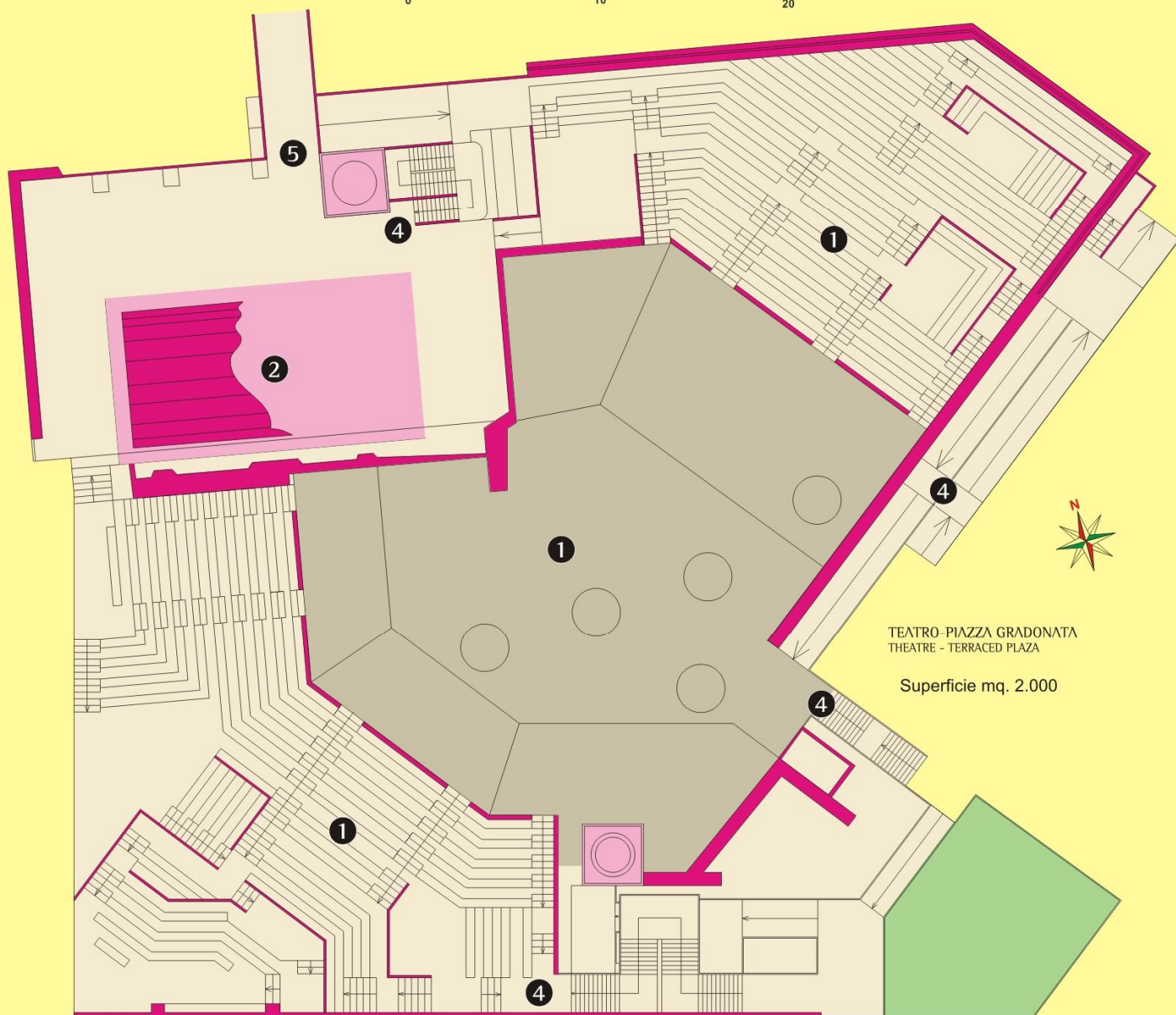
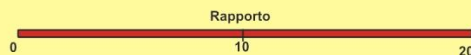
SUPERFICIE TOTALE
TOTAL SURFACE AREA mq 965



- ④ Accessi (rampa e scale) - Accesses (ramp and stairs)
- ⑥ Ingresso - Biglietteria / Entrance - Ticket window
- ⑦ Sala Gradonata. Posti: n. 161 + n. 5 per disabili
Terrace room. Seats: 161 + 5 for the disabled
- ⑧ Palcoscenico - Stage
- ⑨ Servizi - Lavatories
- ⑩ Spazi Tecnici (camerini, servizi, depositi, locali impianti, ecc.)
Technical spaces (changing rooms, lavatories, storage, plant/machinery rooms, etc.)



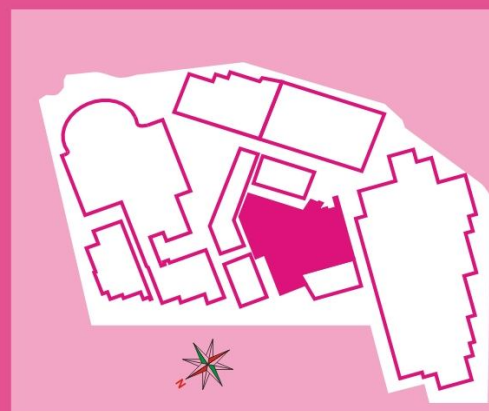
PIAZZA GRADONATA
TERRACED PLAZA



TEATRO - PIAZZA GRADONATA
THEATRE - TERRACED PLAZA

Superficie mq. 2.000

- ❶ Piazza gradonata (spettacoli all'aperto, incontri di gruppo, concerti, musica, recitals, ecc.)
Posti: n. 2500 circa (gradoni e sezione inclinata)
Seats: approximately 2500 (tiers plus sloping section)
Disappearing stage equipment
- ❷ Spazio Scenografico - Stage area
- ❹ Accessi (rampe e scale) - Accesses (ramps and stairs)
- ❺ Collegamento con l'edificio E3 - Connection with building E3

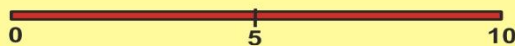




area espositiva exhibition area



PIANO TERRA
GROUND FLOOR



SUPERFICIE UTILE
USEFUL SURFACE AREA mq 270

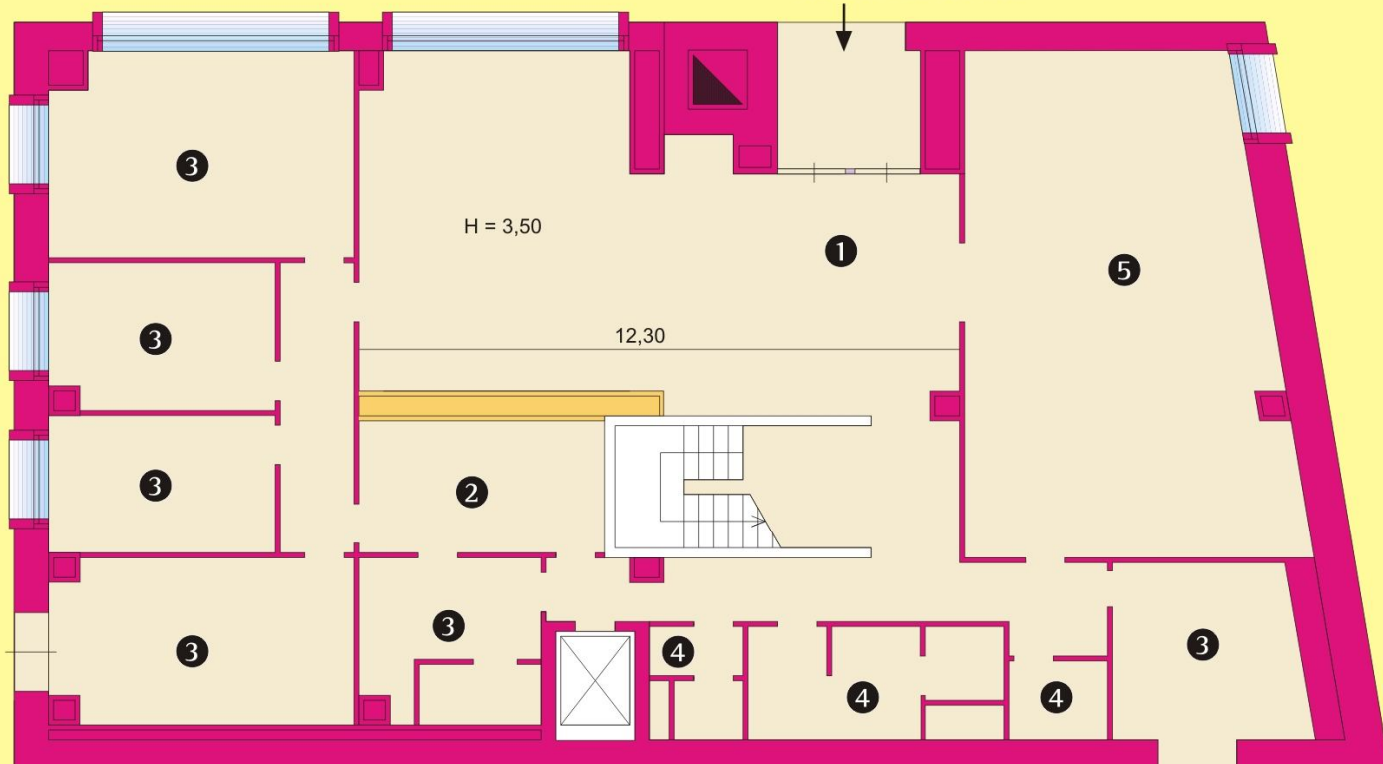
SCALE, SERVIZI E IMPIANTI
STAIRS, LAVATORIES AND PLANT/MACHINERY mq 40

SUPERFICIE TOTALE
TOTAL SURFACE AREA mq 310

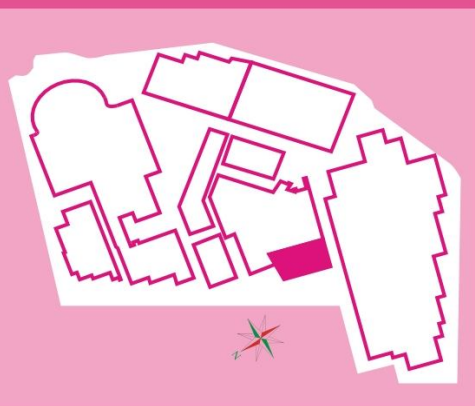
UFFICI DIREZIONALI



Ingresso da P.le Asia

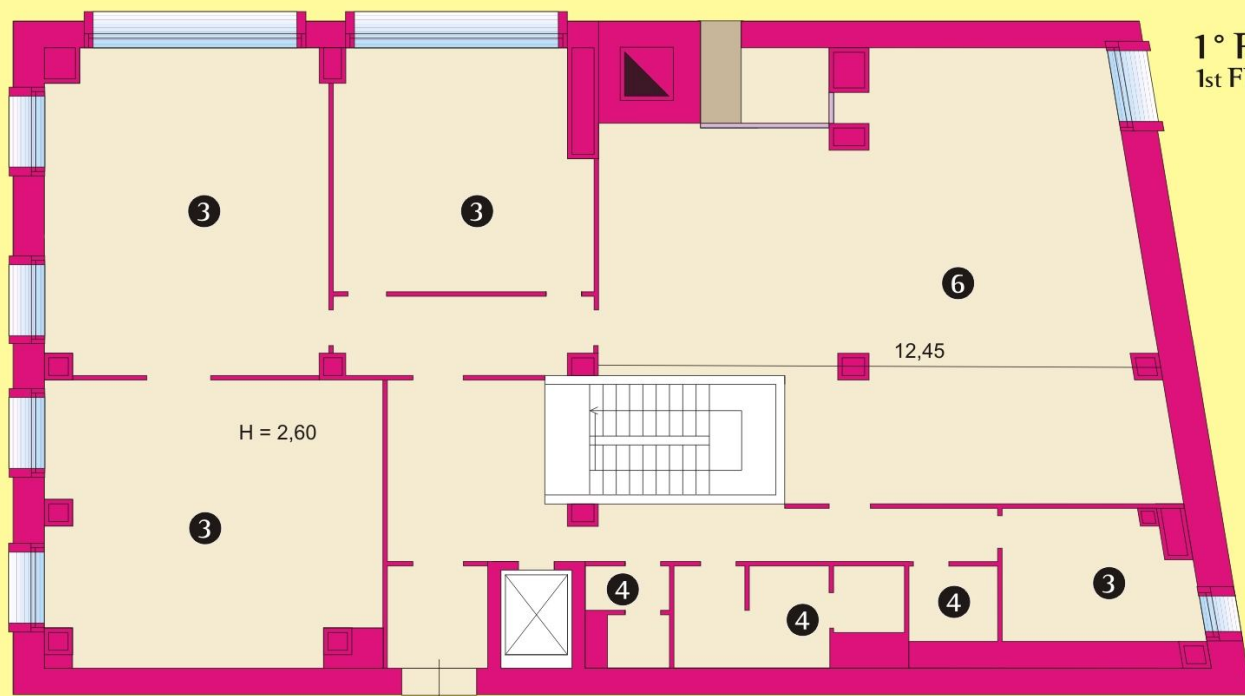


- ① Hall
- ② Informazioni e Biglietteria - Information and ticket window
- ③ Uffici - Offices
- ④ Servizi - Lavatories
- ⑤ Sala Stampa - Press room





area espositiva exhibition area



1° PIANO
1st FLOOR

SUPERFICIE UTILE
USEFUL SURFACE AREA mq 264

SCALE, SERVIZI E IMPIANTI
STAIRS, LAVATORIES AND PLANT/MACHINERY mq 51

SUPERFICIE TOTALE
TOTAL SURFACE AREA mq 315



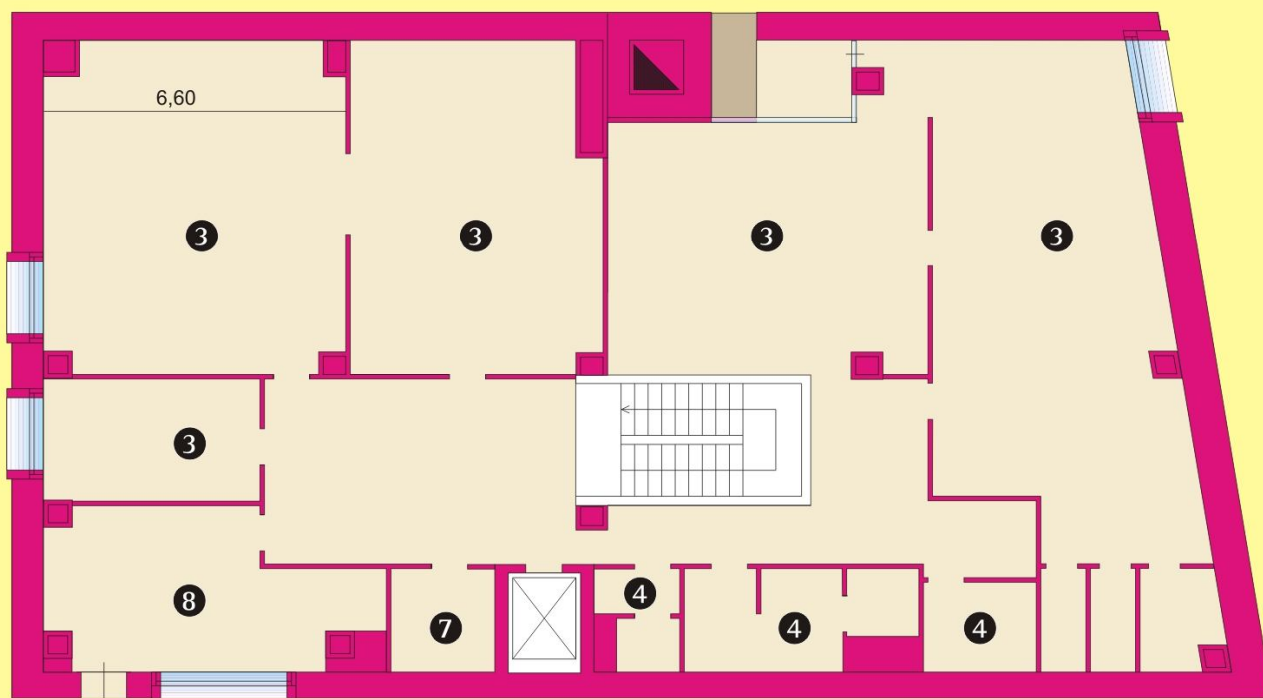
- ③ Uffici - Offices
- ④ Servizi - Lavatories
- ⑥ Sala Controllo generale, Sicurezza ed Incendio
General control, security and fire prevention room
- ⑦ Macchine ascensori - Lift machinery
- ⑧ Sala Regia Teatro all'aperto - Piazza Gradonata
Control cubicle for open-air theatre - terraced plaza

SUPERFICIE UTILE
USEFUL SURFACE AREA mq 256

SCALE, SERVIZI E IMPIANTI
STAIRS, LAVATORIES AND PLANT/MACHINERY mq 64

SUPERFICIE TOTALE
TOTAL SURFACE AREA mq 320

2° PIANO
2nd FLOOR





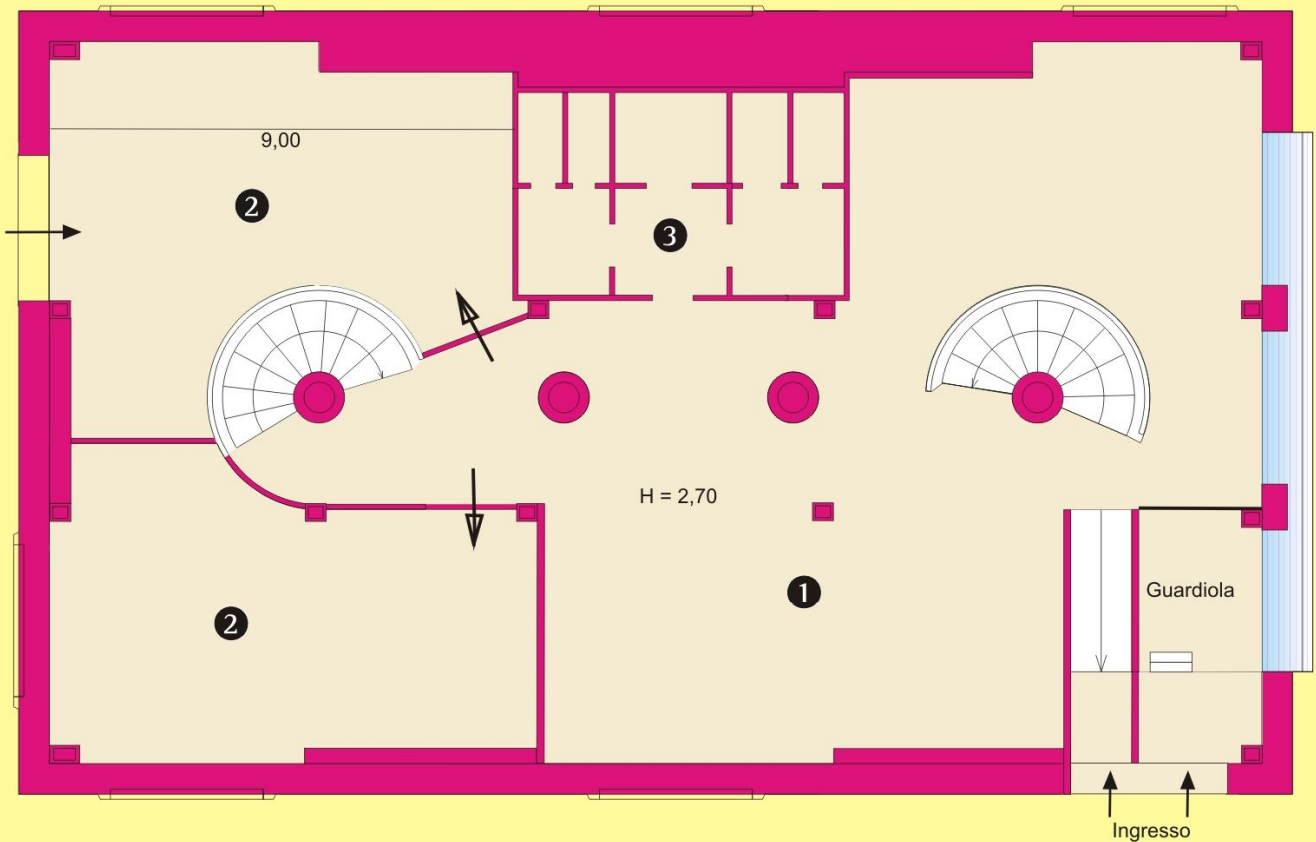
PIANO TERRA
PIANO TERRA

Palazzina dell'Innovazione

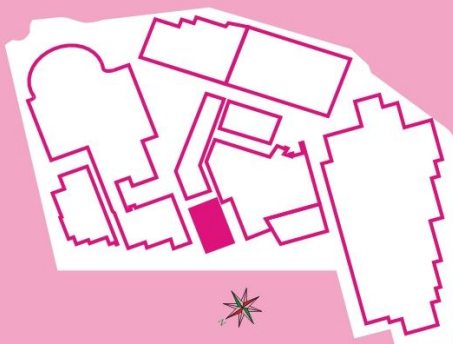
SUPERFICIE UTILE
USEFUL SURFACE AREA mq 253

SCALE, SERVIZI E IMPIANTI
STAIRS, LAVATORIES AND PLANT/MACHINERY mq 52

SUPERFICIE TOTALE
TOTAL SURFACE AREA mq 305



- ① Reception
- ② Sala riunioni
- ③ Servizi - Lavatories
- ⑤ Spazi espositivi

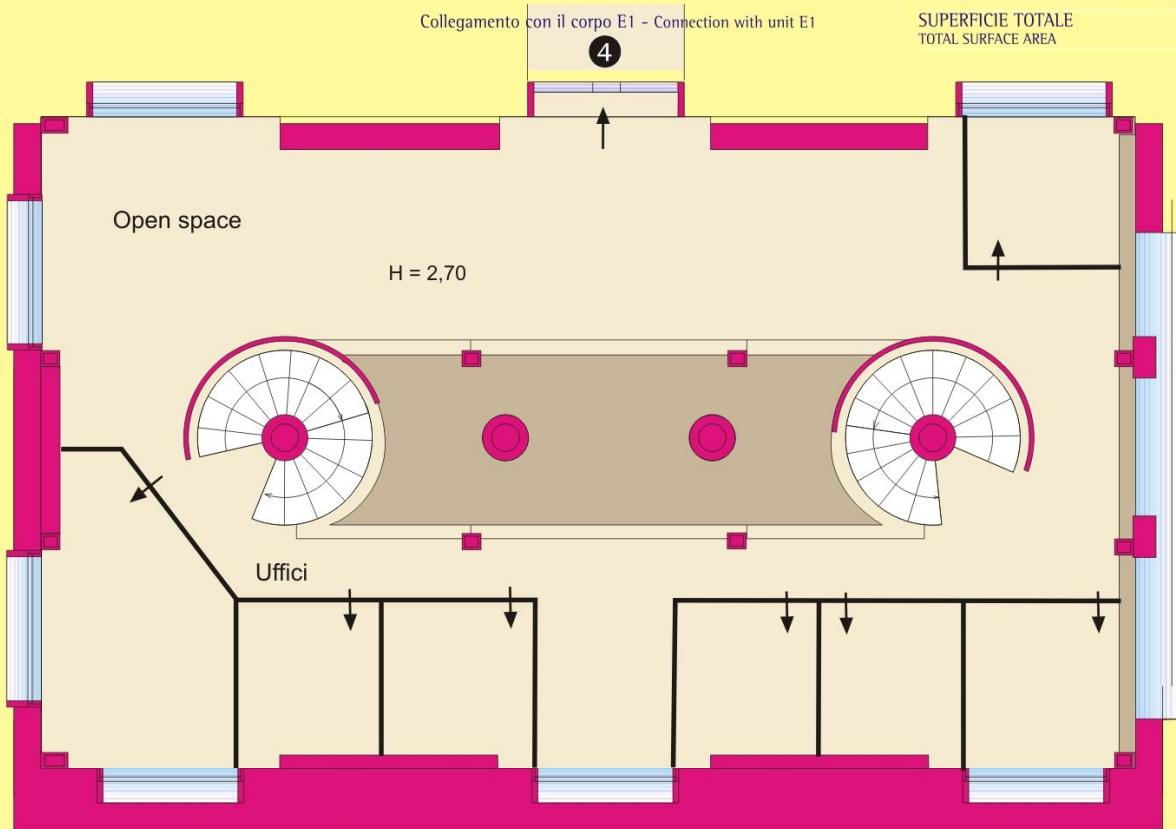


Ingresso, P.le Asia

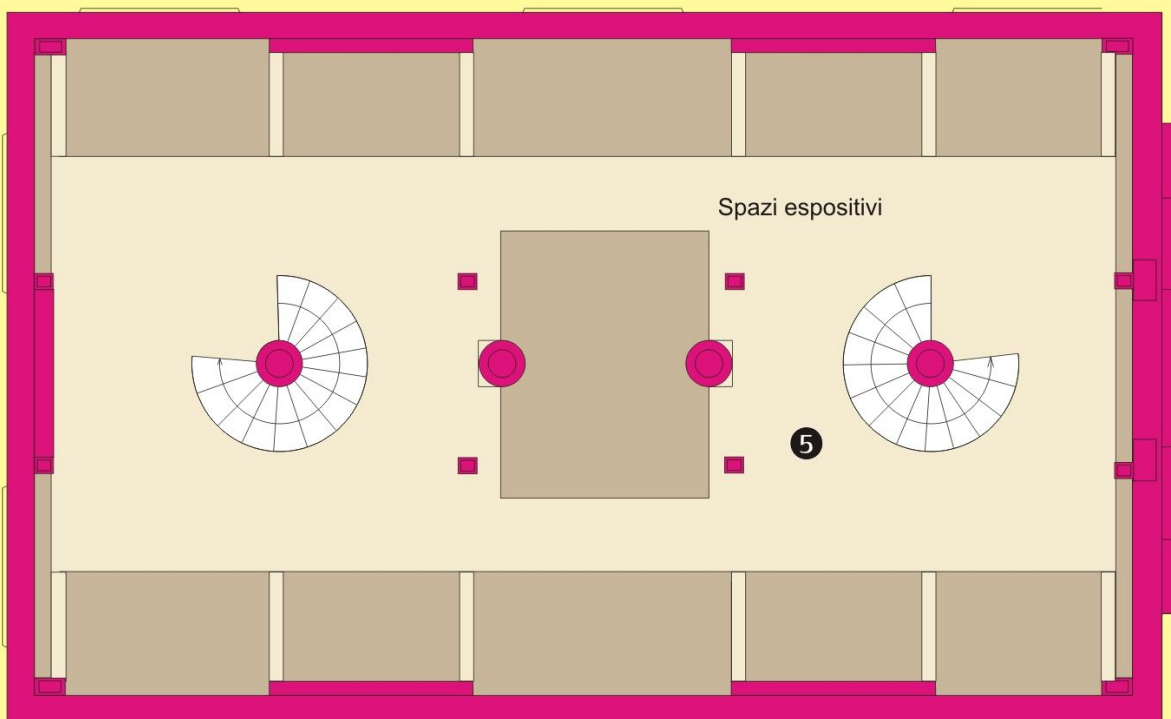


1° PIANO
1° PIANO

SUPERFICIE UTILE
USEFUL SURFACE AREA mq 251
SCALE, SERVIZI E IMPIANTI
STAIRS, LAVATORIES AND PLANT/MACHINERY mq 27
SUPERFICIE TOTALE
TOTAL SURFACE AREA mq 278



2° PIANO
2nd FLOOR





Veduta panoramica

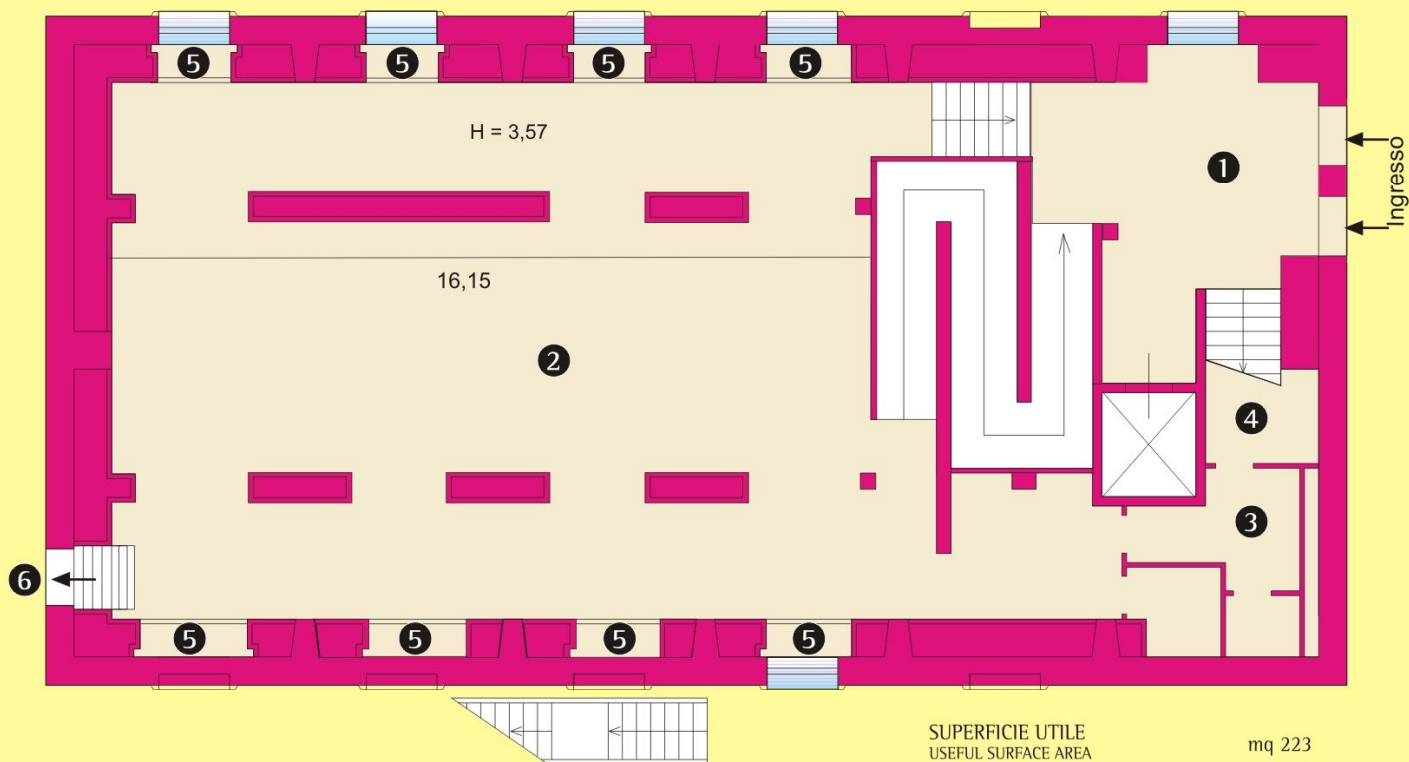


Spazi a verde

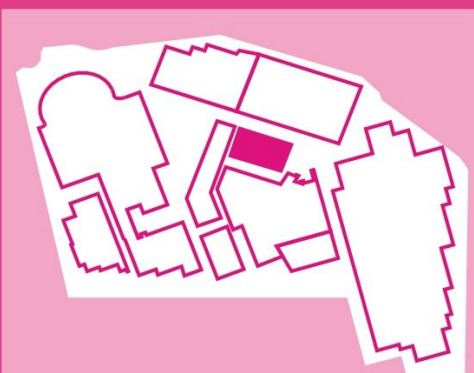




PIANO TERRA
GROUND FLOOR



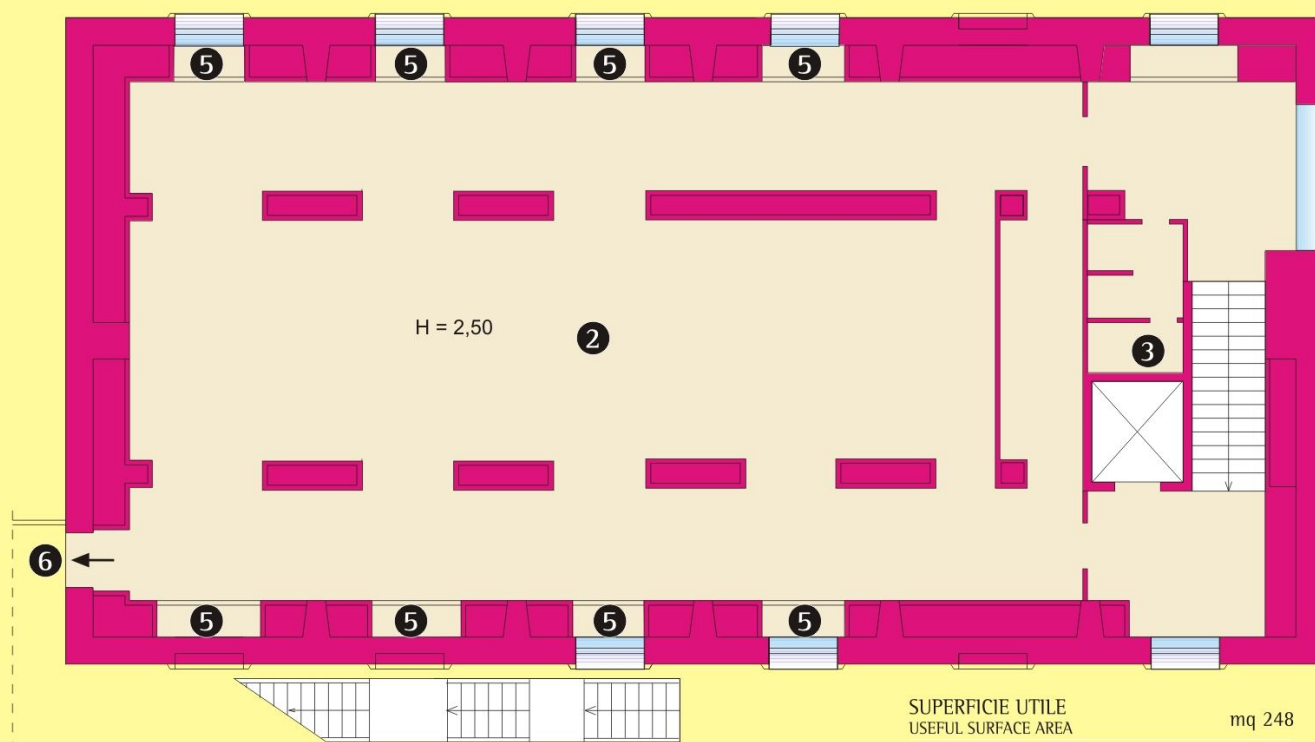
- ① Hall
- ② Spazio Espositivo - Exhibition space
- ③ Servizi - Lavatories
- ④ Macchine ascensore - Lift machinery
- ⑤ Vetrine Espositive - Display windows
- ⑥ Uscite di Sicurezza - Emergency exits
- ⑦ Ufficio - Office



E4 Galleria d'arte



1° PIANO
1st FLOOR



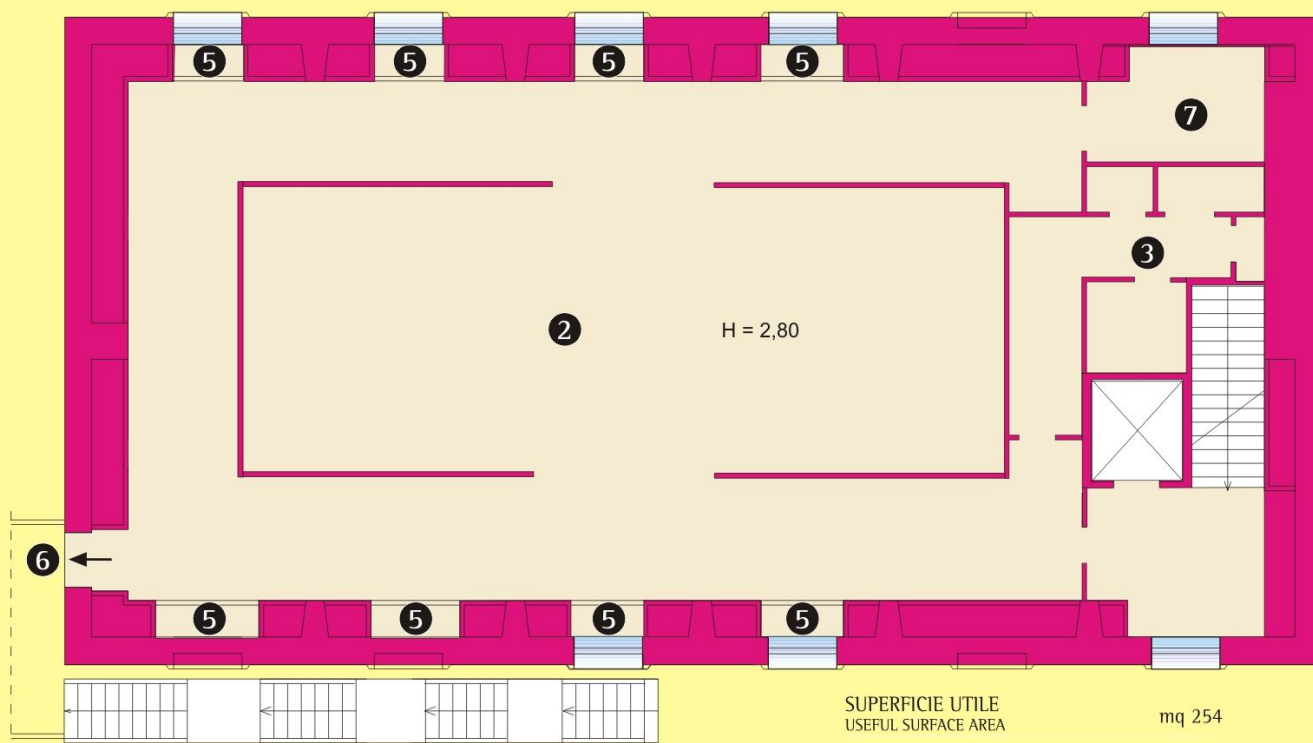
SUPERFICIE UTILE
USEFUL SURFACE AREA mq 248

SCALE, SERVIZI E IMPIANTI
STAIRS, LAVATORIES AND PLANT/MACHINERY mq 72

SUPERFICIE TOTALE
TOTAL SURFACE AREA mq 320



2° PIANO
2nd FLOOR



SUPERFICIE UTILE
USEFUL SURFACE AREA mq 254

SCALE, SERVIZI E IMPIANTI
STAIRS, LAVATORIES AND PLANT/MACHINERY mq 77

SUPERFICIE TOTALE
TOTAL SURFACE AREA mq 331



area espositiva exhibition area

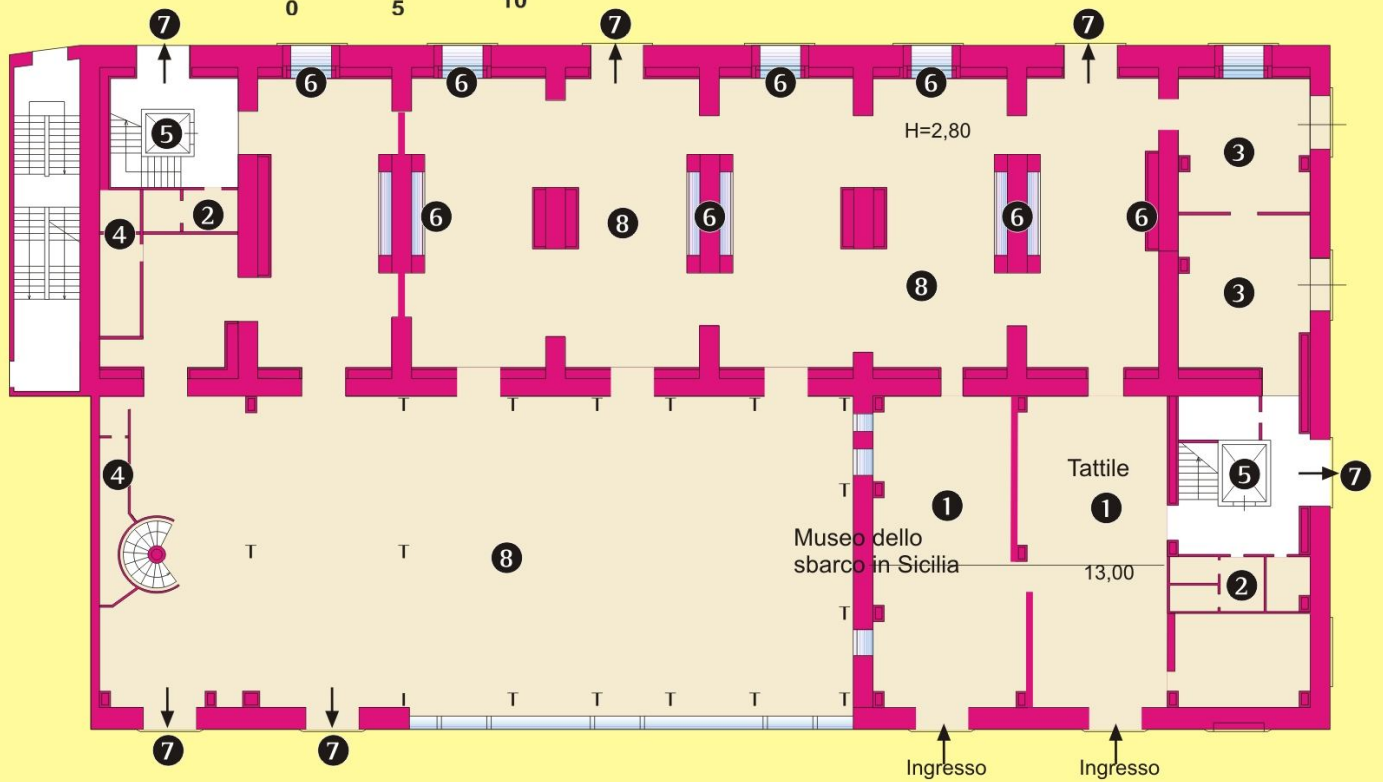


PIANO TERRA GROUND FLOOR

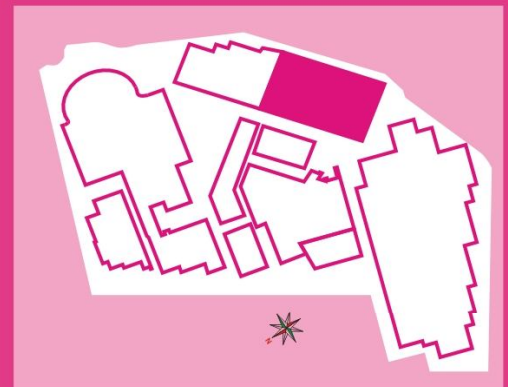
SUPERFICIE UTILE
USEFUL SURFACE AREA mq 1.312

SCALE, SERVIZI E IMPIANTI
STAIRS, LAVATORIES AND PLANT/MACHINERY mq 134

SUPERFICIE TOTALE
TOTAL SURFACE AREA mq 1.446



Ingresso Museo dello Sbarco



- ① Hall d'ingresso
- ② Servizi
- ③ Ricevimento, deposito e smistamento materiale
- ④ Impianti
- ⑤ Gruppo scale ed ascensori
- ⑥ Vettrine Espositive
- ⑦ Uscite di Sicurezza
- ⑧ Spazi Espositivi
- ⑨ Uffici



area espositiva exhibition area

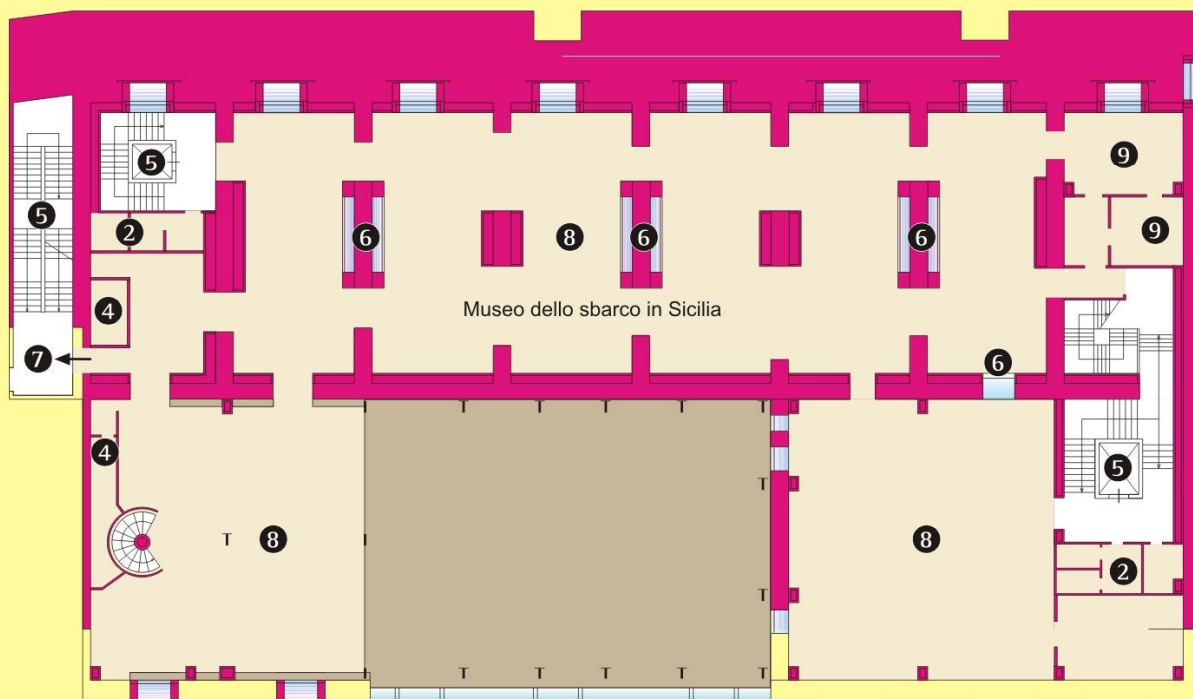


1° PIANO 1st FLOOR

SUPERFICIE UTILE
USEFUL SURFACE AREA mq 1.092

SCALE, SERVIZI E IMPIANTI
STAIRS, LAVATORIES AND PLANT/MACHINERY mq 128

SUPERFICIE TOTALE
TOTAL SURFACE AREA mq 1.220

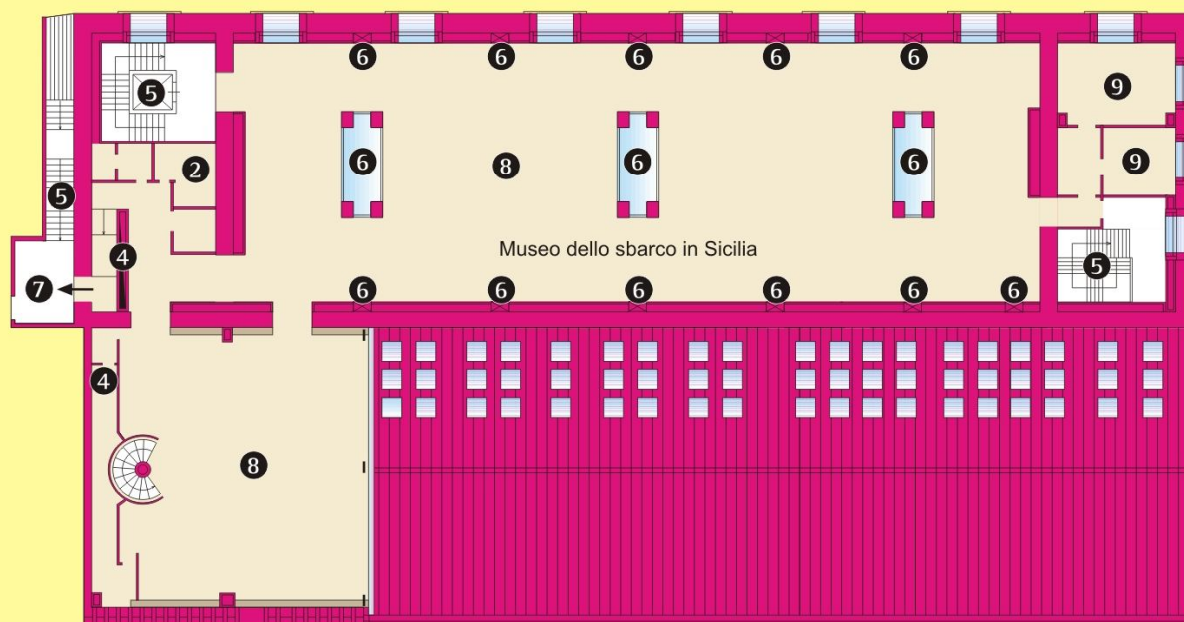


2° PIANO 2nd FLOOR

SUPERFICIE UTILE
USEFUL SURFACE AREA mq 834

SCALE, SERVIZI E IMPIANTI
STAIRS, LAVATORIES AND PLANT/MACHINERY mq 116

SUPERFICIE TOTALE
TOTAL SURFACE AREA mq 950





Museo dello sbarco in Sicilia

**Nulla è perduto con la pace.
Tutto può essere perduto
con la guerra**

Pio XII



Museo dello sbarco in Sicilia

Museo dello sbarco in Sicilia



Museo dello sbarco in Sicilia



E5 - Sala Tattile





Museo del Cinema



Museo del Cinema



Museo del Cinema



area espositiva exhibition area

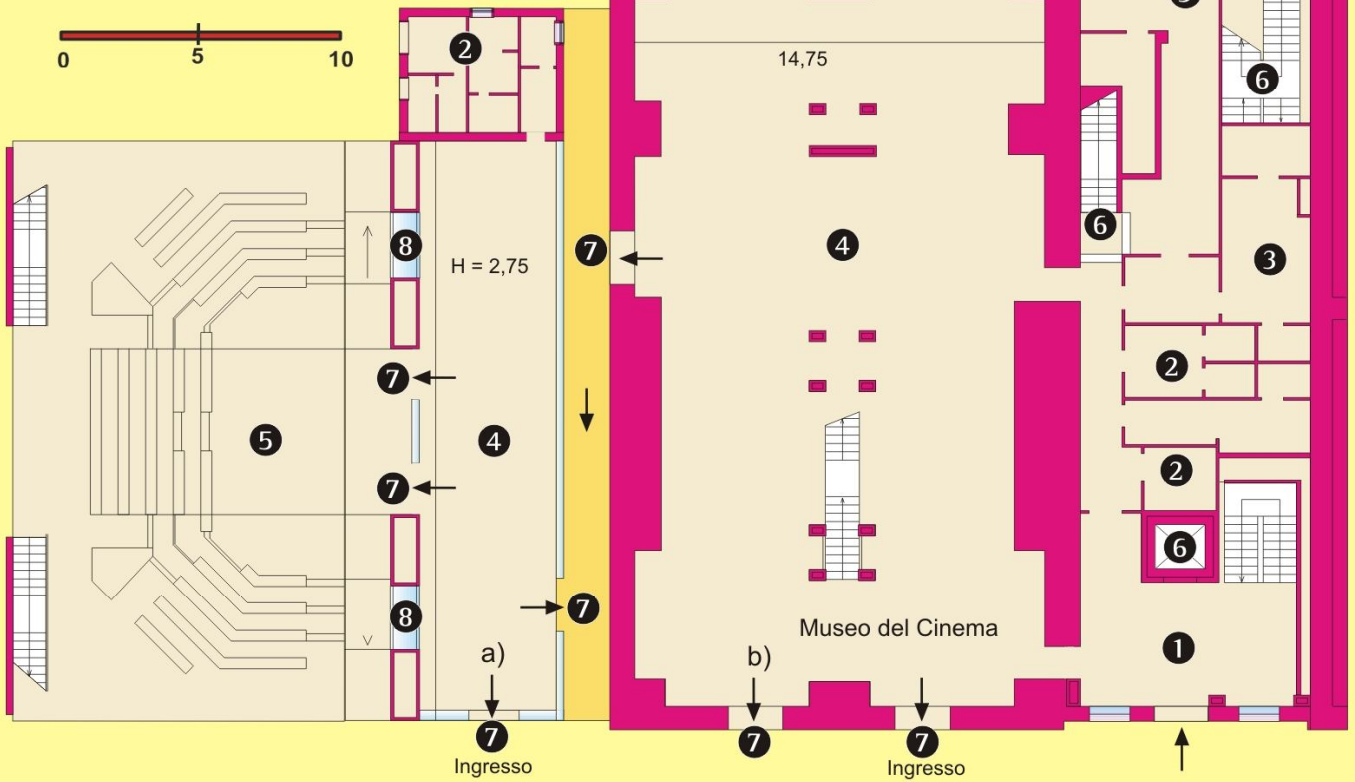
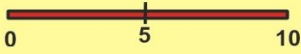
E6

SUPERFICIE UTILE
USEFUL SURFACE AREA mq 652

SCALE, SERVIZI E IMPIANTI
STAIRS, LAVATORIES AND PLANT/MACHINERY mq 160

SUPERFICIE TOTALE
TOTAL SURFACE AREA mq 812

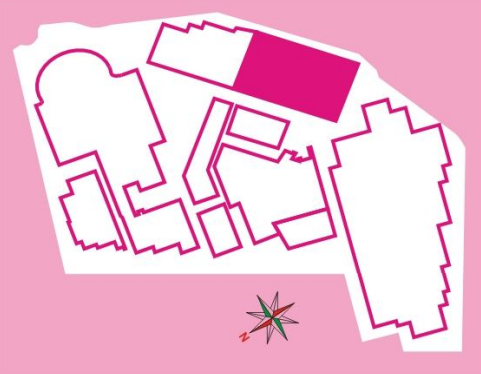
PIANO TERRA GROUND FLOOR



Museo del Cinema



30



- ① Hall d'ingresso - Entrance hall
- ② Servizi - Lavatories
- ③ Uffici - Offices
- ④ Spazi Espositivi - Exhibition spaces
- ⑤ Aula all'aperto / Open-air classroom
- ⑥ Gruppo scala ed ascensore - Stairs and lifts
- ⑦ Uscite di Sicurezza - Emergency exits
- ⑧ Vetrine Espositive - Display windows
- ⑨ Scale di Collegamento - Connecting stairs



area espositiva exhibition area

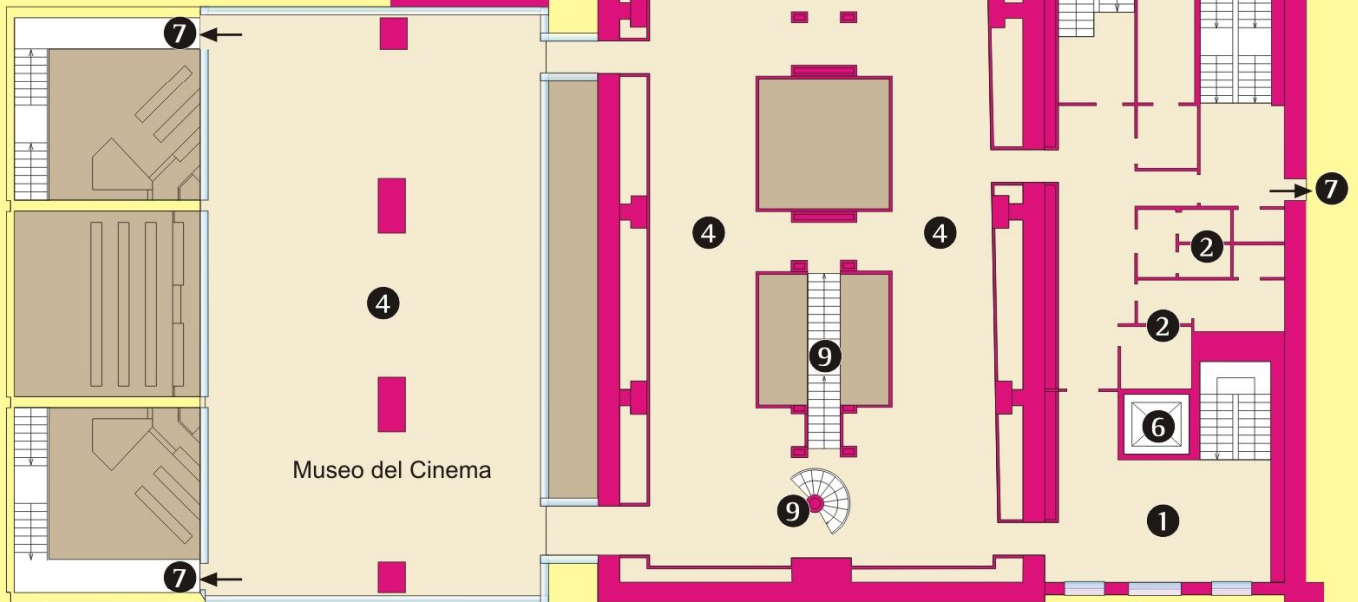
E6

1° PIANO 1st FLOOR

SUPERFICIE UTILE
USEFUL SURFACE AREA mq 623

SCALE, SERVIZI E IMPIANTI
STAIRS, LAVATORIES AND PLANT/MACHINERY mq 162

SUPERFICIE TOTALE
TOTAL SURFACE AREA mq 785

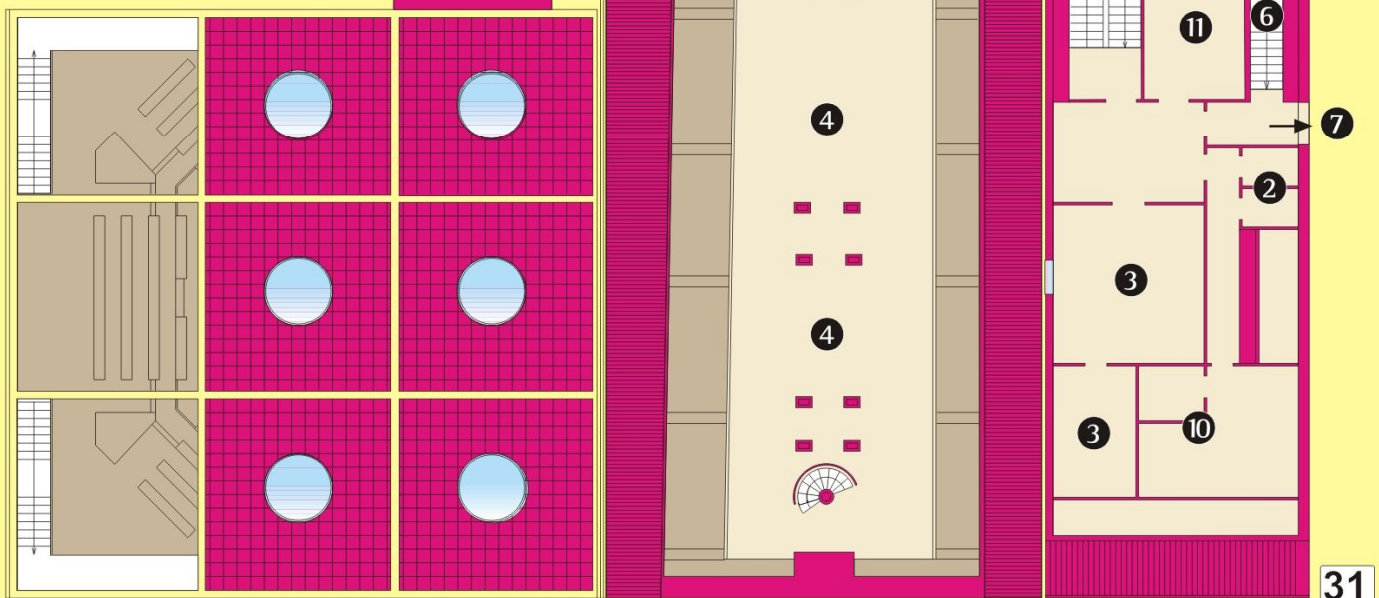


2° PIANO 2nd FLOOR

SUPERFICIE UTILE
USEFUL SURFACE AREA mq 260

SCALE, SERVIZI E IMPIANTI
STAIRS, LAVATORIES AND PLANT/MACHINERY mq 66

SUPERFICIE TOTALE
TOTAL SURFACE AREA mq 326

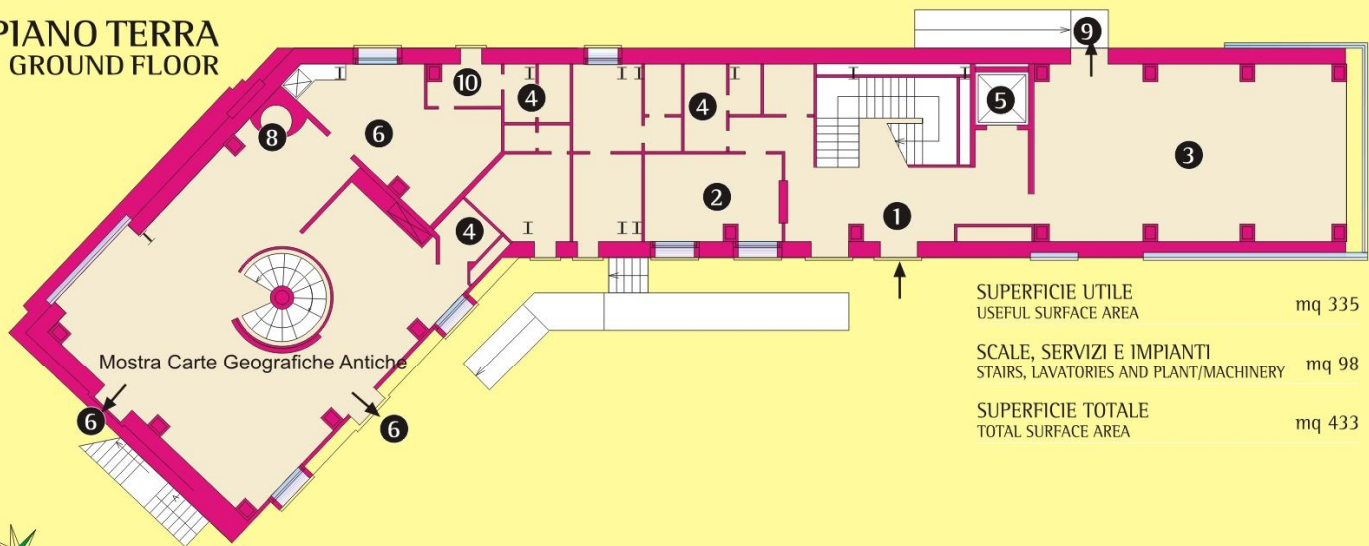




area espositiva exhibition area



PIANO TERRA GROUND FLOOR



Mostra Carte Geografiche Antiche

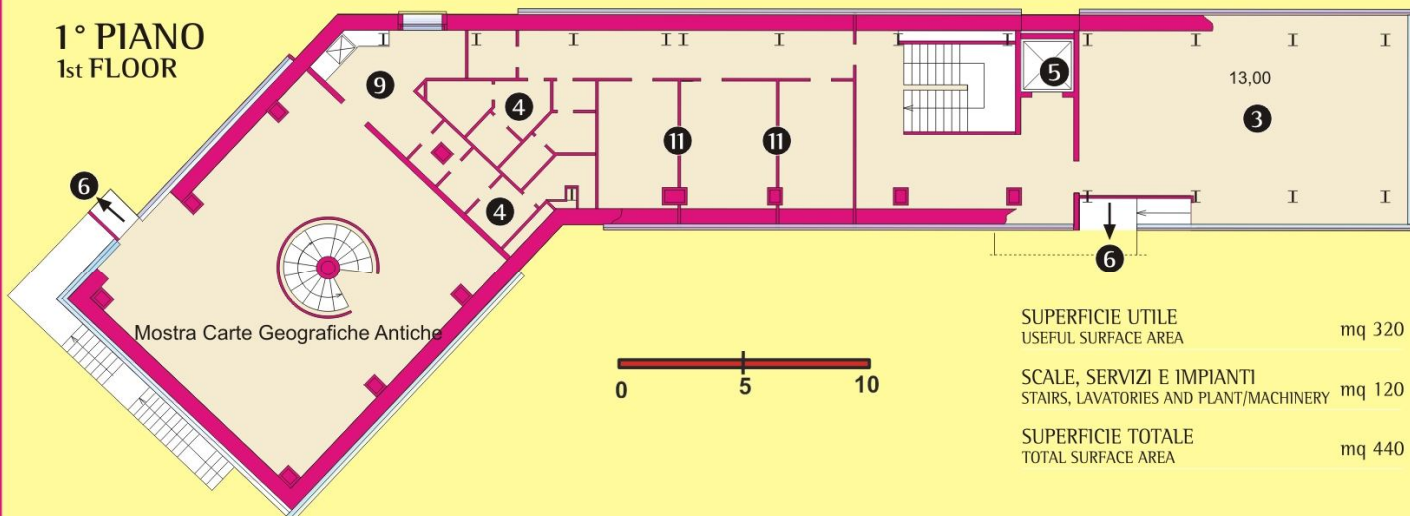
SUPERFICIE UTILE
USEFUL SURFACE AREA mq 335

SCALE, SERVIZI E IMPIANTI
STAIRS, LAVATORIES AND PLANT/MACHINERY mq 98

SUPERFICIE TOTALE
TOTAL SURFACE AREA mq 433



1° PIANO 1st FLOOR

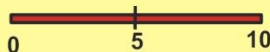


Mostra Carte Geografiche Antiche

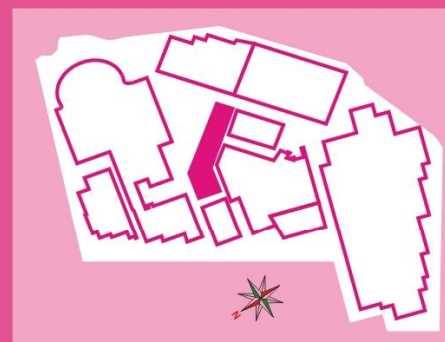
SUPERFICIE UTILE
USEFUL SURFACE AREA mq 320

SCALE, SERVIZI E IMPIANTI
STAIRS, LAVATORIES AND PLANT/MACHINERY mq 120

SUPERFICIE TOTALE
TOTAL SURFACE AREA mq 440



Mostra Carte Geografiche Antiche



- ① Hall Ingresso - Entrance hall
- ② Segreteria e Informazioni - Secretariat and information office
- ③ Aula (seminari, laboratori) - Classroom (seminars, workshops)
- ④ Servizi - Lavatories
- ⑤ Gruppo scala ed ascensore - Stairs and lifts
- ⑥ Uscite di sicurezza - Emergency exits
- ⑨ Cucina - Kitchen
- ⑩ Ingresso servizio e spogliatoi - Service entrance and changing rooms
- ⑪ Uffici - Offices